

RENCOL GREB



M
WILHELMSSEN A/s

www.mw.dk · +45 86 15 01 11 · mw@mw.dk

Rencol - greb

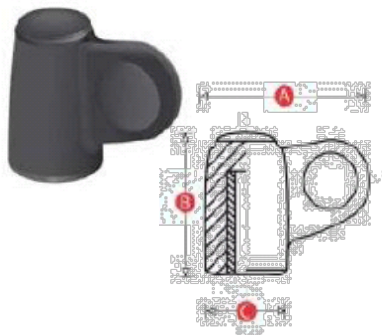
Kapitel

9



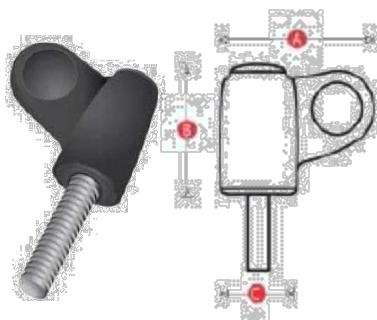
Rencol - greb

Mickey wing indiv. gevind



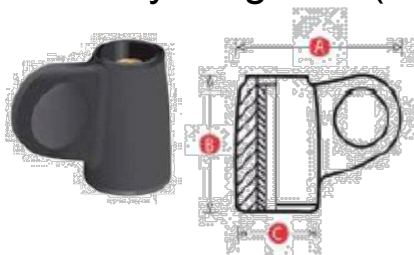
Varenummer	A	B	C	Gevind
REN1816	32	19	11	M4 M5 M6
REN1817	45	24	15	M6 M8
REN1818	60	31	18	M8 M10

Mickey wing udv. gevind



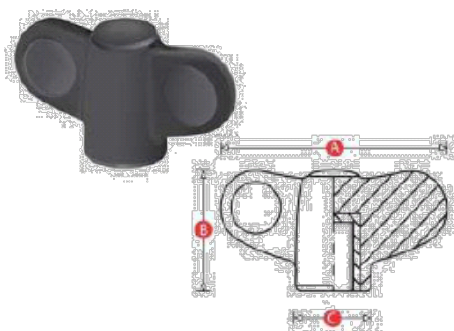
Varenummer	A	B	C	Gevind	Længde i mm.
REN1816/M	21,5	19	11	M4 M5 M6	10 , 15 , 20 , 25
REN1817/M	30	24	15	M6 M8	10, 15, 30
REN1818/M	39	31	18	M8 M10	15, 25, 30

Mickey wing indiv.(enkelt)



Varenummer	A	B	C	Gevind
REN1816/T	21,5	16,5	11	M4 M5 M6
REN1817/T	30	22	15	M6 M8
REN1818/T	39	29	18	M8 M10

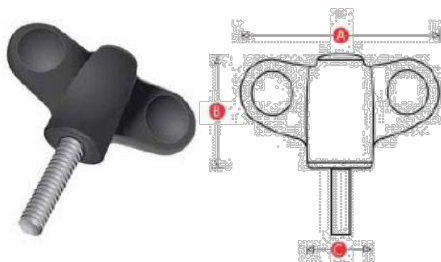
Mickey wing indiv. dobbelt



Varenummer	A	B	C	Gevind
REN1716	32	16,5	11	M4 M5 M6
REN1717	45	22	15	M6 M8
REN1718	60	29	18	M8 M10

Rencol – greb

Mickey wing dobbelt udv. gevind



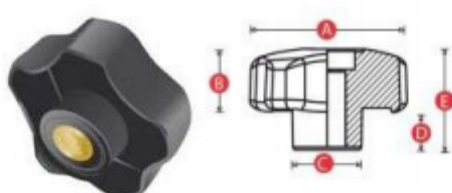
Varenummer	A	B	C	Gevind	Længde i mm.
REN1716/M	32	19	11	M4 M5 M6	10, 15, 20, 25
REN1717/M	45	24	15	M6 M8	10, 15, 30
REN1718/M	60	31	18	M8 M10	15, 25, 30

Mickey wing dobbelt indv. gevind



Varenummer	A	B	C	Gevind
REN1716/T	32	16,5	11	M4 M5 M6
REN1717/T	45	22	15	M6 M8
REN1718/T	60	29	18	M8 M10

Stjernegreb indv. gevind



Varenummer	A	B	C	D	E	Gevind
REN3028	28	16	12	10	26	M5, M6
REN3040	40	17	18	12	29	M6, M8
REN3050	50	19	21	12	31	M6, M8, M10
REN3060	60	21	23	13	34	M8, M10, M12

Stjernegreb udv. gevind



Varenummer	A	B	C	D	E	Gevind	Længde i mm.
REN3028/M	28	16	12	10	26	M5, M6	10, 15, 20
REN3040/M	40	17	18	12	29	M6, M8	15, 20, 25
REN3050/M	50	19	21	12	31	M6, M8, M10	20, 25, 35
REN3060/M	60	21	23	13	34	M8, M10, M12	20, 30, 40

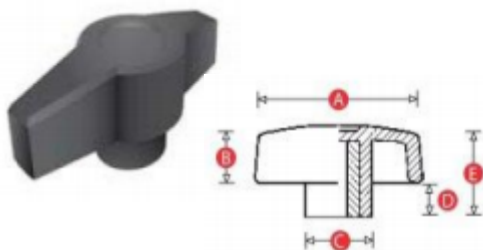
Rencol – greb

Stjernegreb indv. gevind



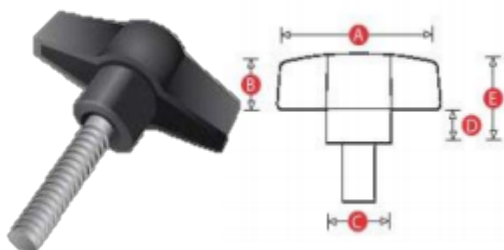
Varenummer	A	B	C	D	E	Gevind
REN3028/T	28	16	12	10	26	M5, M6
REN3040/T	40	17	18	12	29	M6, M8
REN3050/T	50	19	21	12	31	M6, M8, M10
REN3060/T	60	21	23	13	34	M8, M10, M12

Vingegreb indv. gevind



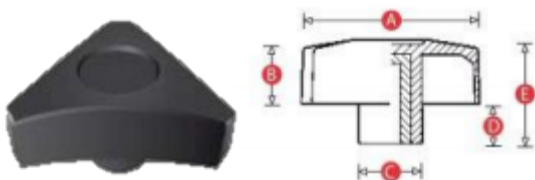
Varenummer	A	B	C	D	E	Gevind
REN1523	28	10	11	3	13	M5, M6
REN1516	40	12	15	8	20	M5, M6, M8
REN1517	50	15	15	9	24	M6, M8
REN1518	60	18	19	12	30	M8, M10

Vingegreb udv. gevind



Varenummer	A	B	C	D	E	Gevind	Længde
REN1523	28	10	11	3	13	M5, M6	10, 15, 20
REN1516	40	12	15	8	20	M5, M6, M8	15, 20, 25, 35
REN1517	50	15	15	9	24	M6, M8	25, 35, 40
REN1518	60	18	19	12	30	M8, M10	20, 30, 40

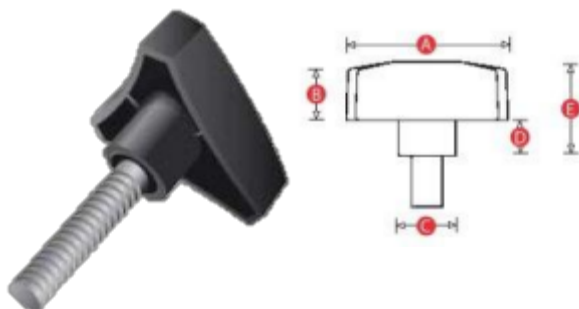
Trekantgreb indv. gevind



Varenummer	A	B	C	D	E	Gevind
REN1527	28	11	11	6	17	M5, M6
REN1510	40	12	15	8	20	M6, M8
REN1511	50	15	15	9	24	M6, M8
REN1512	60	18	19	12	30	M8, M10

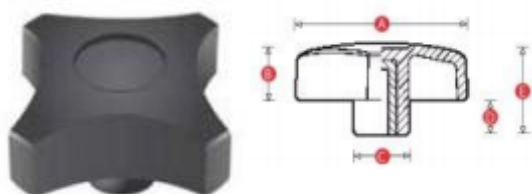
Rencol – greb

Trekantgreb udv. gevind



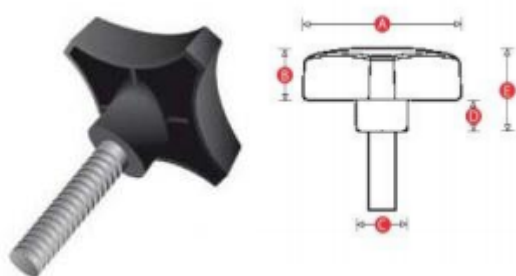
Varenummer	A	B	C	D	E	Gevind
REN1527	28	11	11	6	17	M5, M6
REN1510	40	12	15	8	20	M6, M8
REN1511	50	15	15	9	24	M6, M8
REN1512	60	18	19	12	30	M8, M10

Krydsgreb indv. gevind



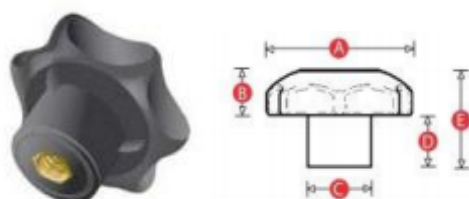
Varenummer	A	B	C	D	E	Gevind
REN1526	28	11	11	6	17	M5, M6
REN1507	40	12	15	8	20	M6, M8
REN1508	50	15	15	9	24	M6, M8
REN1509	60	18	19	12	30	M8, M10

Krydsgreb udv. gevind



Varenummer	A	B	C	D	E	Gevind	Længde
REN1526/M	28	11	11	6	17	M5	10,15,20
						M6	
REN1507/M	40	12	15	8	20	M6	15,20,25
						M8	
REN1508/M	50	15	15	9	24	M6	20,25,35
						M8	
REN1509/M	60	18	19	12	30	M8	20,30,40
						M10	

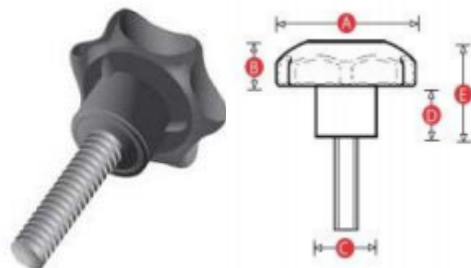
Stjernegreb m. kappe indv. gevind



Varenummer	A	B	C	D	E	Gevind
REN1525	28	11	11	6	17	M5, M6
REN1513	40	12	15	8	20	M6, M8
REN1514	50	15	15	9	24	M6, M8
REN1515	60	18	19	12	30	M8, M10

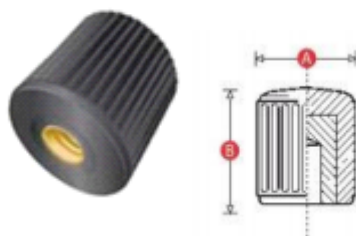
Rencol – greb

Stjernegreb med kappe udv. gevind



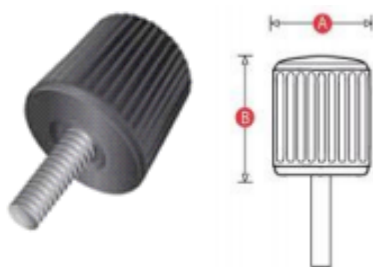
Varenummer	A	B	C	D	E	Gevind	Længde
REN4030/M	30	13	14	9	22	M6	10,20,30
REN4040/M	40	13	18	12	25	M6, M8	15,25
REN4050/M	50	16	21	16	32	M8, M10	20,30,40
REN4060/M	60	21	24	19	40	M10,M12	30,40
REN4080/M	80	25	35	25	50	M12,M16	40,50

Riflet fingerskrue indv. gevind



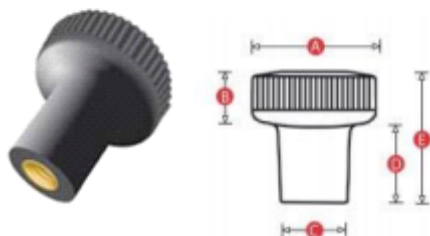
Varenummer	A	B	Gevind
REN0501-M4	15	16	M4
REN0501-M5	15	16	M5
REN0502-M5	20	22	M5
REN0502-M6	20	22	M6
REN0503-M6	25	34	M6

Riflet fingerskrue udv. gevind



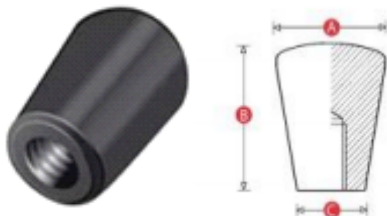
Varenummer	A	B	Gevind
REN0501-M-M4X10	15	16	M4
REN0501-M-M5X20	15	16	M5
REN0501-M-M6X15	15	16	M6
REN0502-M-M5X15	20	22	M5
REN0502-M-M6X15	20	22	M6

Riflet fingerskrue indv. gevind

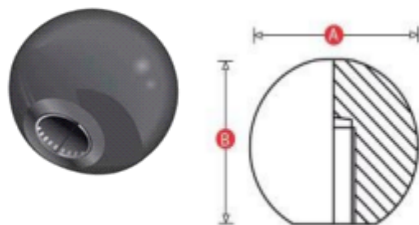


Varenummer	A	B	C	D	E	Gevind
REN1650-M4	20	10	12	10	20	M4
REN1650-M5	20	10	12	10	20	M5
REN1651-M6	25	10	14	15	25	M6
REN1652-M8	30	11	15	19	30	M8

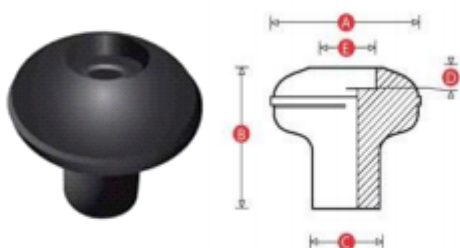
Rencol - greb



Varenummer	A	B	C	Gevind
REN1031-M6	22	30	12	M6
REN1032-M8	28	35	18	M8
REN1033-M10	35	44	22	M10
REN1033-M12	35	44	22	M12



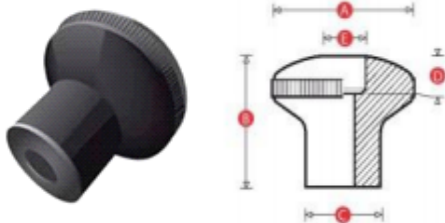
Varenummer	A	B	Gevind
REN0300-M4	16	15	M4
REN0300-M6	16	15	M6
REN0301-M4	19	17	M4
REN0301-M5	19	17	M5
REN0301-M6	19	17	M6
REN0302-M6	25	23	M6
REN0302-M8	25	23	M8
REN0303-M6	32	30	M6
REN0303-M8	32	30	M8
REN0303-M10	32	30	M10
REN0304-M10	38	36	M10
REN0304-M12	38	36	M12
REN0305-M10	44	43	M10
REN0305-M12	44	43	M12
REN0305-M16	44	43	M16
REN0306-M16	51	49	M16



Varenummer	A	B	C	D	E	Gevind
REN181-08MM	48	45	22	6	20	M8

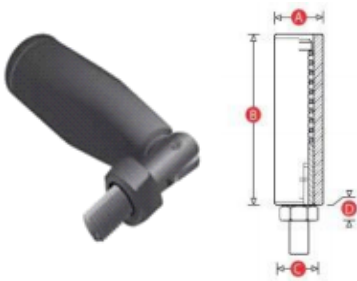
Rencol - greb

Velvet knop greb indv. gevind



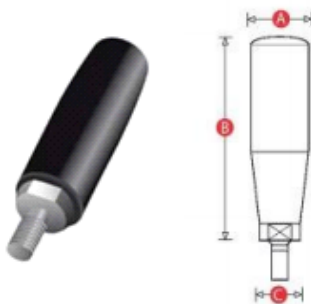
Varenummer	A	B	C	D	E	Gevind
REN1208	50	44	26	8	12	M8, M10

Vibbegreb udv. gevind



Varenummer	A	B	C	D	Gevind	Længde
REN3250/M	20	50	14	6	M6	9
REN3270/M	25	70	20	6	M8	10

Cylindergreb udv. gevind



Varenummer	A	B	C	Gevind	Længde
REN3155/M	20	55	12	M6	12
REN3167/M	23	67	18	M8	15
REN3177/M	25	77	18	M8, M10	15
REN3187/M	27	87	20	M10, M12	15
REN3197/M	29	97	20	M10, M12	15

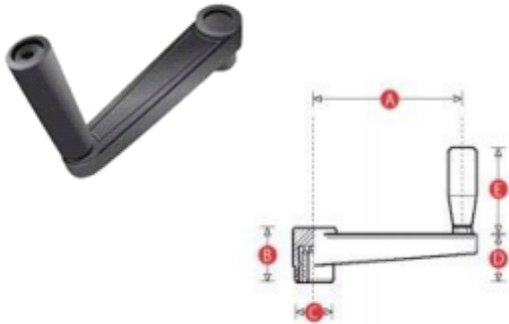
Cylindergreb indv. gevind



Varenummer	A	B	C	D	Tolerance hul
REN1303/S	18	40	12	8	5, 6
REN1304/S	20	60	14	8	6, 8
REN1305/S	24	80	18	13	8, 10
REN1306/S	28	95	20	13	10, 12
REN1307/S	30	110	22	15	10, 12

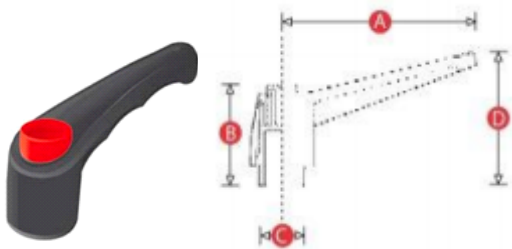
Rencol - greb

Håndsving



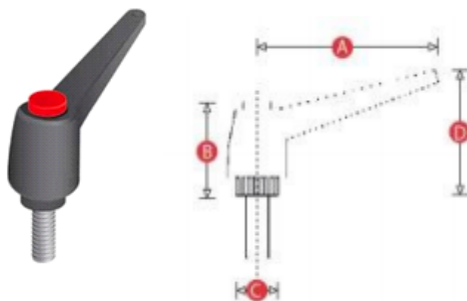
Varenummer	A	B	C	D	E	Gevind
REN5565	65	31	26	32	56	M8, M10, M12
REN5580	80	33	30	33	56	M8, M10, M12
REN55110	110	39	33	39	76	M10, M12, M14
REN55140	140	49	42	50	86	M12, M14, M16
REN55185	185	54	46	58	86	M12, M14, M16

Kiphåndtag indv. gevind



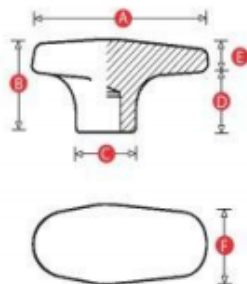
Varenummer	A	B	C	D	Gevind
REN3843	43	29	12	30	M5, M6
REN3865	65	38	15	44	M6, M8
REN3883	83	47	19	54	M8, M10
REN38104	104	56	24	64	M10, M12, M16

Kiphåndtag udv. gevind



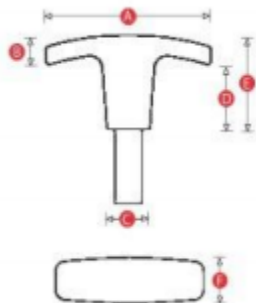
Varenummer	A	B	C	D	Gevind	Længde
REN2843/M	43	26	12	32	M5, M6	15, 20, 25
REN2865/M	65	37	15	46	M8	15, 20, 25
REN2883/M	83	46	19	57	M10	30, 35, 50
REN28104/M	104	51	24	68	M12, M16	35, 50

Rencol - greb



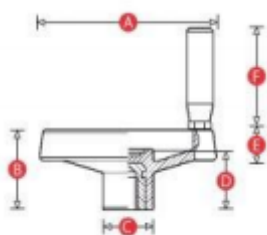
Varenummer	A	B	C	D	E	F	Gevind
REN1345	60	30	20	18	12	25	M6, M8
REN1346	80	30	22	18	12	30	M8, M10
REB1347	100	35	25	20	15	32	M10, M12

T-greb udv. gevind



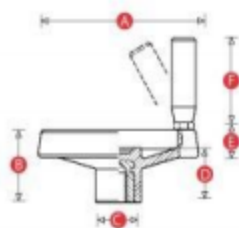
Varenummer	A	B	C	D	E	F	Gevind	Længde
REN3740/M	40	10	13	20	30	13	M5	15
REN3750/M	50	9	14	16	25	16	M5	15, 20
REN3760/M	60	9	16	23	32	18	M6	20, 25
REN3772/M	71	15	18	19	34	19	M8, M10	20, 30
REN3780/M	80	14	26	26	40	24	M10, M12	30, 40

Svinghjul



Varenummer	A	B	C	D	E	F	Pilot bore
REN92100	100	44	28	33	16	56	5
REN92130	130	49	31	35	20	66	5
REN92160	160	56	40	40	24	76	5
REN92200	200	61	50	40	28	76	5
REN92250	250	70	56	44	32	92	5

Svinghjul



Varenummer	A	B	C	D	E	F	Pilot bore
REN93130	130	49	31	35	20	76	5
REN93160	160	56	40	40	24	76	5
REN93200	200	61	50	40	28	76	5
REN93250	250	70	56	44	32	96	5

M **WILHELMSSEN A/s**



Aarhus afdelingen

Åbyvej 69
8230 Åbyhøj
Tlf: +45 86 15 01 11
Email: mw@mw.dk

Vejle afdelingen

Pottemagervej 3
7100 Vejle
Tlf: +45 75 82 02 88
Email: mw@mw.dk

Herlev afdelingen

Mileparken 29
2730 Herlev
Tlf: +45 44 52 13 52
Email: mw@mw.dk