



M WILHELMSSEN A/S



The Specialists in Knobs, Handles and Handwheels.



<u>Contents</u>	<u>Page</u>
Technical Information	2
Contents by category	3
<u>Knobs</u>	
Single Mickey Wing Knob	4
Twin Mickey Wing Knob	5
Soft Touch Lobe Knob	6
Lobe Knob	7 - 9
Wing Knob	10
Tristar Knob	11
Scallop Knob with Logo	12
Scallop Knob	13 - 14
Star Knob	15 - 16
Star and Scallop Knob	17
Scallop Knob	18
Self Assembly	19
Knurled Knob	20 - 21
Slug and Timer Control Knob	22
Button Knob	23
Taper Knob	24
Mini Star Knob	25
Self Fixing Ball Knob	26
Threaded Ball Knob	27
Self Fixing and Threaded Ball Knob	28
Revolving Knob	29
<u>Handles</u>	
Tee Handle	30 - 31
Revolving Handle	32 - 33
Handle	34
Handle and PVC Grip	35
Cranking Handle	36
Clamping Handle	37 - 38
Bridge Handle	39 - 40
Metal Handle	41
<u>Handwheels</u>	
Control Handwheel	42 - 44
Steel Handwheel	45 - 47
<u>Custom Moulding</u>	48

Rencol

Component Sourcing Solutions



Rencol has been the UK's market leader for more than 50 years in the design and supply of plastic knobs, handles and handwheels, and we are delighted to have just launched our latest range and brand new catalogue.

Having been recently acquired by a major USA-based group with extensive sourcing and manufacturing facilities in China, Rencol now enjoys the significant benefits of being able to offer extremely competitive customised tooling and moulding prices to all our customers, with first-off samples typically available within 35 days of completion of design and purchase order being placed.

Rencol will use our new and distinct advantages to continue the introduction of exciting new generations of knobs and handles, while designing and adding many other new products to our portfolio.

Rencol will be delighted to quote you for all our own products, and especially for all of your customised tooling and moulding requirements, irrespective of your specified material or quantity requirements.

Technical Information

Thermoplastic

Material: Nylon 6
Working temperature: up to 140°C
Resistant to: alcohols, esters, aromatic hydrocarbons, diluted alkalines, ketones, oils, fuels, grease, fats, weatherability (including UV light)

Reinforced Thermoplastic

Material: Nylon 6 glass filled
Working temperature: up to 180°C
Resistant to: alcohols, esters, aromatic hydrocarbons, diluted alkalines, ketones, oils, fuels, grease, fats, weatherability (including UV light)

Duroplast

Material: Phenolic
Working temperature: -30°C to 140°C
Resistant to: diluted mineral acids, alcohols, chlorinated hydrocarbons, aromatic hydrocarbons, detergents, grease, oils, weatherability (including UV light)

Soft-Touch Mouldings

Material: Polypropylene substrate, TPE over-mould
Rencol has standard parts already available in this design, used particularly extensively in both industrial and special needs market products.

Please ask our Sales Dept. for more details.

Aluminium

Material: BS4300/5 2011-T3

Brass

Material: BS2874 CZ121

Zinc Plated Steel

Material: EN1A leaded-bright zinc passivated

Stainless Steel

Material: BS970 303-S31

Colours

Colour options include black, red, yellow, green, blue, white and grey. Other colours are available on request. If you would like to see the colours before ordering, samples can be provided free of charge.

Thread Depths

Thread depths are usually a minimum of 1.5 x the diameter of the thread where possible.

Tolerances

In general, our products are produced to the following tolerances:

Bore sizes: $\pm 0.1\text{mm}$ (0.004in)
Outside dimensions: $\pm 0.5\text{mm}$ (0.020in)
Male Thread Length: $\pm 1\text{mm}$ (0.040in)

Special Options

Our international CAD/CAM in-house tooling facilities allow us unrivalled production flexibility and enable a prompt and extremely competitive quotation whenever custom tooling is required. In addition, we can offer unlimited modifications to existing products such as:

- alternative threads or bores
- non-standard insert and stud materials, such as - stainless steel
- alternative thread lengths
- colours
- inch sized threads
- additional moulding materials for specialist requirements
- pad printing and/or engraving

Such special options can usually be offered for a small additional cost, but may be subject to minimum order quantities. Our sales department will be happy to provide you with more details on the above or any other modification you may require.

New Developments

In order to continue to offer the most comprehensive range of knobs, handles and handwheels, we will regularly introduce new products. There will be regular updates to this catalogue, but to ensure your personal copy, please contact our sales department or visit our website www.rencol.com.

We welcome any suggestions you might have that can improve our service to you.

Thank you for choosing RENCOL.

RohS - All our standard range are confirmed as RohS compliant.



Contents by Category

Knobs



Knobs

Handles



Handles

Handwheels

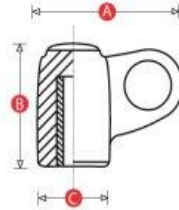


Handwheels

Custom Mouldings



Custom Mouldings

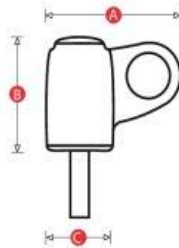


Type	Code	A	B	C	Thread
Female: Brass Insert	1816	21.5	19	11	M4 M5 M6
	1817	30	24	15	M6 M8
	1818	39	31	18	M8 M10

Material: High impact resistant thermoplastic - matt finish

Coloured Cap options available: yellow, blue, green, white, grey, black, red and orange.

Please note that these products are not available for sale in the Netherlands, Belgium, Luxembourg, France, Germany, Hungary, Italy or Switzerland.

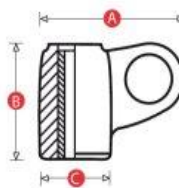


Type	Code	A	B	C	Thread	Length
Male: Plated Steel	1816/M	21.5	19	11	M4	10 16 20
					M5	10 16 20
					M6	15 20 25
	1817/M	30	24	15	M6	10 15 20
					M8	15 20 30
	1818/M	39	31	18	M8	15 25 30
M10					15 25 30	

Material: High impact resistant thermoplastic - matt finish

Coloured Cap options available: yellow, blue, green, white, grey, black, red and orange.

Please note that these products are not available for sale in the Netherlands, Belgium, Luxembourg, France, Germany, Hungary, Italy or Switzerland.

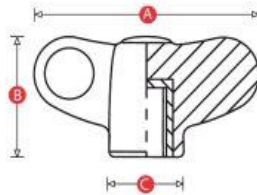


Type	Code	A	B	C	Tapped through thread
Tapped Through: Brass Insert	1816/T	21.5	16.5	11	M4 M5 M6
	1817/T	30	22	15	M6 M8
	1818/T	39	29	18	M8 M10

Material: High impact resistant thermoplastic - matt finish

Coloured Cap options available: yellow, blue, green, white, grey, black, red and orange.

Please note that these products are not available for sale in the Netherlands, Belgium, Luxembourg, France, Germany, Hungary, Italy or Switzerland.

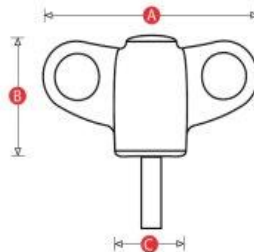


Type	Code	A	B	C	Thread
Female: Brass Insert	1716	32	19	11	M4 M5 M6
	1717	45	24	15	M6 M8
	1718	60	31	18	M8 M10

Material: High impact resistant thermoplastic - matt finish

Coloured Cap options available: yellow, blue, green, white, grey, black, red and orange.

Please note that these products are not available for sale in the Netherlands, Belgium, Luxembourg, France, Germany, Hungary, Italy or Switzerland.

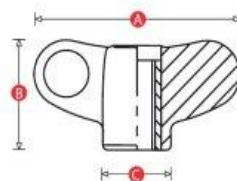


Type	Code	A	B	C	Thread	Length
Male: Plated Steel	1716/M	32	19	11	M4	10 16 20
					M5	10 16 20
					M6	15 20 25
	1717/M	45	24	15	M6	10 15 20
					M8	15 20 30
	1718/M	60	31	18	M8	15 25 30
M10					15 25 30	

Material: High impact resistant thermoplastic - matt finish

Coloured Cap options available: yellow, blue, green, white, grey, black, red and orange.

Please note that these products are not available for sale in the Netherlands, Belgium, Luxembourg, France, Germany, Hungary, Italy or Switzerland.

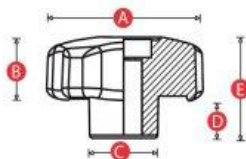


Type	Code	A	B	C	Tapped through thread
Tapped through: Brass Insert	1716/T	32	16.5	11	M4 M5 M6
	1717/T	45	22	15	M6 M8
	1718/T	60	29	18	M8 M10

Material: High impact resistant thermoplastic - matt finish

Coloured Cap options available: yellow, blue, green, white, grey, black, red and orange.

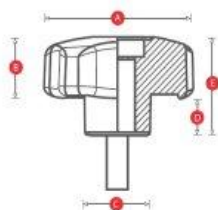
Please note that these products are not available for sale in the Netherlands, Belgium, Luxembourg, France, Germany, Hungary, Italy or Switzerland.



Type	Code	A	B	C	D	E	Thread
Female: Brass Insert	3028	28	16	12	10	26	M5 M6
	3040	40	17	18	12	29	M6 M8
	3050	50	19	21	12	31	M6 M8 M10
	3060	60	21	23	13	34	M8 M10 M12

Material: Two-part mouldings - Inner moulding Polypropylene - Over moulded with 'soft-touch' TPE.

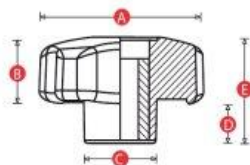
Coloured cap options: black, red and grey.



Type	Code	A	B	C	D	E	Male Thread	Length
Male: Plated Steel	3028/M	28	16	12	10	26	M5	10 15 20
							M6	10 15 20
	3040/M	40	17	18	12	29	M6	15 20 25
							M8	15 25 35
	3050/M	50	19	21	12	31	M6	20 25 35
							M8	25 35 40
	3060/M	60	21	23	13	34	M8	20 30 40
							M10	20 30 40
						M12	30 40 50	

Material: Two-part mouldings - Inner moulding Polypropylene - Over moulded with 'soft-touch' TPE.

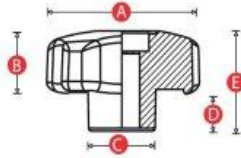
Coloured cap options: black, red and grey.



Type	Code	A	B	C	D	E	Tapped through thread
Tapped through: Brass Insert	3028/T	28	16	12	10	26	M5 M6
	3040/T	40	17	18	12	29	M6 M8
	3050/T	50	19	21	12	31	M6 M8 M10
	3060/T	60	21	23	13	34	M8 M10 M12

Material: Two-part mouldings - Inner moulding Polypropylene - Over moulded with 'soft-touch' TPE.

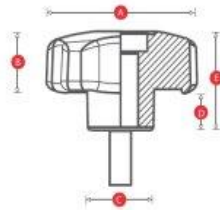
Coloured cap options: black, red and grey.



Type	Code	A	B	C	D	E	Thread
Female: Brass Insert	3128	28	16	14	9	25	M5 M6
	3140	40	17	18	12	29	M6 M8
	3150	50	19	21	12	31	M6 M8 M10
	3160	60	21	21	13	34	M8 M10 M12

Material: High impact resistant thermoplastic - matt finish

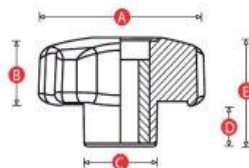
Coloured cap options: black, red and grey.



Type	Code	A	B	C	D	E	Male Thread	Length	
Male: Plated Steel	3128/M	28	16	14	9	25	M5	10 15 20	
							M6	10 15 20	
	3140/M	40	17	18	12	29	M6	15 20 25	
							M8	15 25 35	
	3150/M	50	19	21	12	31	M6	20 25 35	
							M8	25 35 40	
							M10	25 35 40	
							M10	25 35 40	
	3160/M	60	21	21	13	34	M8	20 30 40	
							M10	20 30 40	
								M12	30 40 50

Material: High impact resistant thermoplastic - matt finish

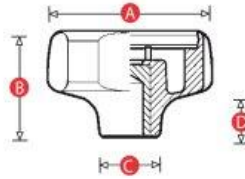
Coloured cap options: black, red and grey.



Type	Code	A	B	C	D	E	Tapped through thread
Tapped through: Brass Insert	3128/T	28	16	14	9	25	M5 M6
	3140/T	40	17	18	12	29	M6 M8
	3150/T	50	19	21	12	31	M6 M8 M10
	3160/T	60	21	21	13	34	M8 M10 M12

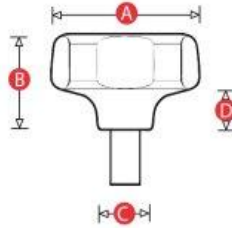
Material: High impact resistant thermoplastic - matt finish

Coloured cap options: black, red and grey.



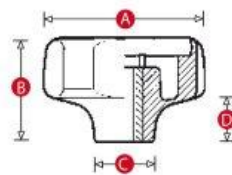
Type	Code	A	B	C	D	Thread
Female: Brass Insert	2030	30	21	12	10	M5 M6
	2040	40	27	15	12	M6 M8
	2050	50	33	18	13	M6 M8 M10
	2060	60	40	22	16	M8 M10 M12
	2075	75	52	26	20	M10 M12

Material: High impact resistant thermoplastic - matt finish

Cap and knob multiple **colour options** available on request.

Type	Code	A	B	C	D	Thread	Length
Male: Plated Steel	2030/M	30	21	12	10	M5	15 20
						M6	15 20 25
	2040/M	40	27	15	12	M6	15 20 25
						M8	15 20 25
	2050/M	50	33	18	13	M6	20 25 35
						M8	25 35 40
						M10	25 35 40
	2060/M	60	40	22	16	M8	20 30
						M10	20 30
					M12	30 40	
2075/M	75	52	26	20	M10	30 40	
					M12	40 50	

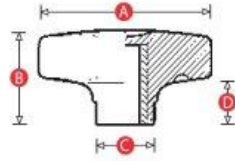
Material: High impact resistant thermoplastic - matt finish

Cap and knob multiple **colour options** available on request.

Type	Code	A	B	C	D	Tapped through thread
Tapped through: Brass Insert	2030/T	30	21	12	10	M5 M6
	2040/T	40	27	15	12	M6 M8
	2050/T	50	33	18	13	M6 M8 M10
	2060/T	60	40	22	16	M8 M10
	2075/T	75	52	26	20	M10 M12

Material: High impact resistant thermoplastic - matt finish

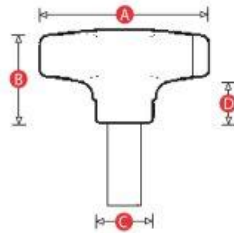
Cap and knob multiple **colour options** available on request.



Type	Code	A	B	C	D	Thread
Female: Brass Insert	2130	30	13	11	6	M6
	2140	40	20	14	11	M8
	2150	50	23	19	11	M8 M10
	2160	60	27	23	14	M10 M12

Material: High impact resistant thermoplastic - matt finish

Standard colour: - Graphite Grey

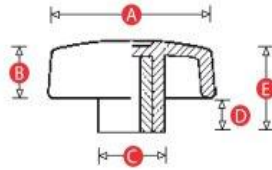


Type	Code	A	B	C	D	Thread	Length
Male: Plated Steel	2130/M	30	13	11	6	M6	20
	2140/M	40	20	14	11	M8	25
	2150/M	50	23	19	11	M8	25
						M10	35
	2160/M	60	27	23	14	M10	30
						M12	40

Material: High impact resistant thermoplastic - matt finish

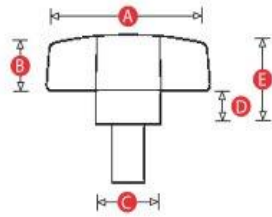
Standard colour: - Graphite Grey





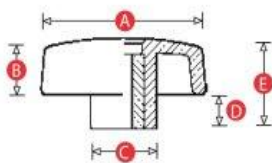
Type	Code	A	B	C	D	E	Thread
Female: Brass Insert	1523	28	10	11	3	13	M5 M6
	1516	40	12	15	8	20	M5 M6 M8
	1517	50	15	15	9	24	M6 M8
	1518	60	18	19	12	30	M8 M10

Material: High impact resistant thermoplastic - matt finish



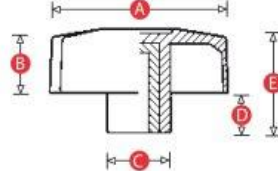
Type	Code	A	B	C	D	E	Thread	Length
Male: Plated Steel	1523/M	28	10	11	3	13	M5	10 15 20
							M6	10 15 20
	1516/M	40	12	15	8	20	M6	15 20 25 35
							M8	15 20 25 35
	1517/M	50	15	15	9	24	M6	25 35 40
							M8	20 25 35 40
	1518/M	60	18	19	12	30	M8	20 30 40
							M10	20 30 40

Material: High impact resistant thermoplastic - matt finish



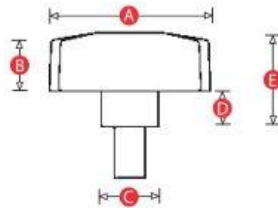
Type	Code	A	B	C	D	E	Tapped through thread
Tapped through: Brass Insert	1523/T	28	10	11	3	13	M5 M6
	1516/T	40	12	15	8	20	M6 M8
	1517/T	50	15	15	9	24	M6 M8
	1518/T	60	18	19	12	30	M8 M10

Material: High impact resistant thermoplastic - matt finish



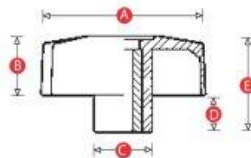
Type	Code	A	B	C	D	E	Thread
Female: Brass Insert	1527	28	11	11	6	17	M5 M6
	1510	40	12	15	8	20	M6 M8
	1511	50	15	15	9	24	M6 M8
	1512	60	18	19	12	30	M8 M10

Material: High impact resistant thermoplastic - matt finish



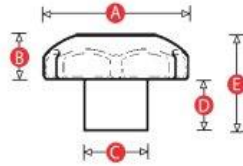
Type	Code	A	B	C	D	E	Thread	Length
Male: Plated Steel	1527/M	28	11	11	6	17	M5	10 15
							M6	15 20
	1510/M	40	12	15	8	20	M6	15 20 25
							M8	15 20 25
	1511/M	50	15	15	9	24	M6	20 25
							M8	25 35
	1512/M	60	18	19	12	30	M8	20 30
							M10	30 40

Material: High impact resistant thermoplastic - matt finish



Type	Code	A	B	C	D	E	Tapped through thread
Tapped through: Brass Insert	1527/T	28	11	11	6	17	M5 M6
	1510/T	40	12	15	8	20	M6 M8
	1511/T	50	15	15	9	24	M6 M8
	1512/T	60	18	19	12	30	M8 M10

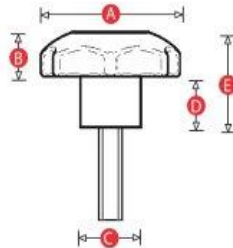
Material: High impact resistant thermoplastic - matt finish



Type	Code	A	B	C	D	E	Thread
Female: Brass Insert	4030	30	13	14	9	22	M6
	4040	40	13	18	12	25	M6
	4050	50	16	21	16	32	M8
	4060	60	21	24	19	40	M10
	4080	80	25	35	25	50	M12 M16

Material: Polypropylene

Also available with **coloured caps**, see below.



Type	Code	A	B	C	D	E	Thread	Length
Male: Plated Steel	4030/M	30	13	14	9	22	M6	10 20 30
	4040/M	40	13	18	12	25	M6	15 25
							M8	15 25
	4050/M	50	16	21	16	32	M8	20 30 40
							M10	30 40
	4060/M	60	21	24	19	40	M10	30 40
							M12	30 50
	4080/M	80	25	35	25	50	M12	40
							M16	50

Material: Polypropylene

Also available with **coloured caps**, see below.

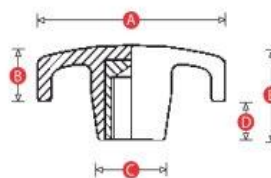
These scallop knobs are supplied, as standard, with a plain black cap. However, to enhance your corporate image or simply to mix and match, you can get the cap in 30 different colours, with your own company logo or any other image you require. The different colours are available at no extra charge, and for your logo, a one off tooling charge of £100 applies. Please contact our Sales Department for more details or to arrange your customised product.





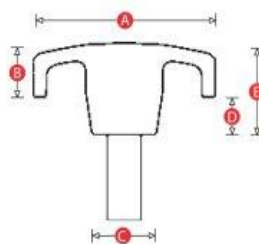
Type	Code	A	B	C	D	E	Thread
Female: Brass Insert	2265	32	11	15	9	20	M5 M6
	2266	44	11	17	10	21	M6 M8
	2267	57	15	20	11	26	M8 M10

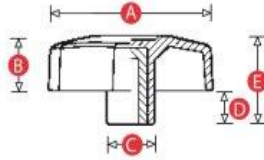
Material: High impact resistant thermoplastic - matt finish



Type	Code	A	B	C	D	E	Thread	Length
Male: Plated Steel	2265/M	32	11	15	9	20	M6	25
	2266/M	44	11	17	10	21	M8	25
	2267/M	57	15	20	11	26	M10	30

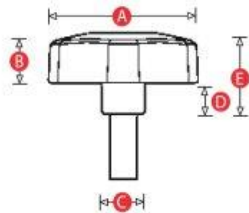
Material: High impact resistant thermoplastic - matt finish





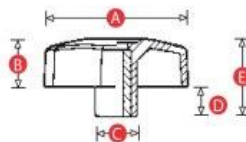
Type	Code	A	B	C	D	E	Thread
Female: Brass Insert	1525	28	11	11	6	17	M5 M6
	1513	40	12	15	8	20	M6 M8
	1514	50	15	15	9	24	M6 M8
	1515	60	18	19	12	30	M8 M10

Material: High impact resistant thermoplastic - matt finish



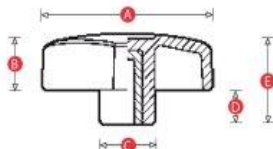
Type	Code	A	B	C	D	E	Thread	Length
Male: Plated Steel	1525/M	28	11	11	6	17	M5	10 15 20
							M6	10 15 20
	1513/M	40	12	15	8	20	M6	15 20 25
							M8	15 20 25 35
	1514/M	50	15	15	9	24	M6	20 25 35
							M8	20 30 35
	1515/M	60	18	19	12	30	M8	25 30
							M10	30 40

Material: High impact resistant thermoplastic - matt finish



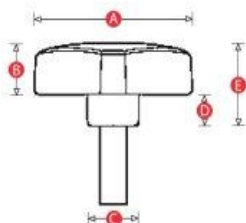
Type	Code	A	B	C	D	E	Tapped through thread
Tapped through: Brass Insert	1525/T	28	11	11	6	17	M5 M6
	1513/T	40	12	15	8	20	M6 M8
	1514/T	50	15	15	9	24	M6 M8
	1515/T	60	18	19	12	30	M8 M10

Material: High impact resistant thermoplastic - matt finish



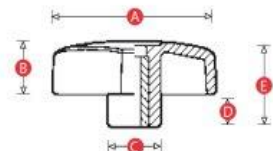
Type	Code	A	B	C	D	E	Thread
Female: Brass Insert	1526	28	11	11	6	17	M5 M6
	1507	40	12	15	8	20	M6 M8
	1508	50	15	15	9	24	M6 M8
	1509	60	18	19	12	30	M8 M10

Material: High impact resistant thermoplastic - matt finish



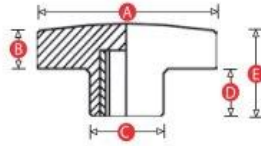
Type	Code	A	B	C	D	E	Thread	Length
Male: Plated Steel	1526/M	28	11	11	6	17	M5	10 15 20
							M6	10 15 20
	1507/M	40	12	15	8	20	M6	15 20 25
							M8	15 25 35
	1508/M	50	15	15	9	24	M6	20 25 35
							M8	25 35 40
	1509/M	60	18	19	12	30	M8	20 30
							M10	30 40

Material: High impact resistant thermoplastic - matt finish



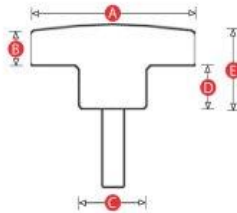
Type	Code	A	B	C	D	E	Tapped through thread
Tapped through: Brass Insert	1526/T	28	11	11	6	17	M5 M6
	1507/T	40	12	15	8	20	M6 M8
	1508/T	50	15	15	9	24	M6 M8
	1509/T	60	18	19	12	30	M8 M10

Material: High impact resistant thermoplastic - matt finish



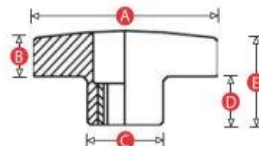
Type	Code	A	B	C	D	E	Thread
Female: Brass Insert	3260	38	11	16	12	23	M6
	3261	50	12	20	15	27	M6 M8 M10
	3262	60	14	24	15	29	M8 M10 M12

Material: High impact resistant thermoplastic - matt finish



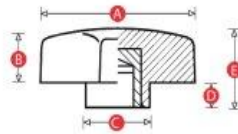
Type	Code	A	B	C	D	E	Thread	Length
Male: Plated Steel	3260/M	38	11	16	12	23	M6	20 25 30
	3261/M	50	12	20	15	27	M8	20 25 30
	3262/M	60	14	24	15	29	M10	30 40

Material: High impact resistant thermoplastic - matt finish



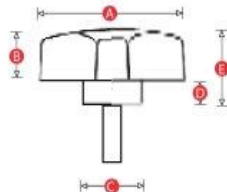
Type	Code	A	B	C	D	E	Tapped through thread
Tapped through: Brass Insert	3260/T	38	11	16	12	23	M6
	3261/T	50	12	20	15	27	M8
	3262/T	60	14	24	15	29	M10

Material: High impact resistant thermoplastic - matt finish



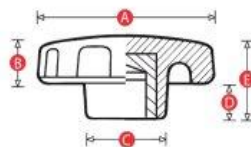
Type	Code	A	B	C	D	E	Thread
Female: Brass Insert	1260	38	12	18	8	20	M6 M8
	1261	50	13	21	12	25	M8 M10
	1262	60	14	24	14	28	M8 M10
	1263	80	17	29	17	34	M10 M12
	1264	100	20	33	18	38	M10 M12

Material: Duroplast - gloss finish



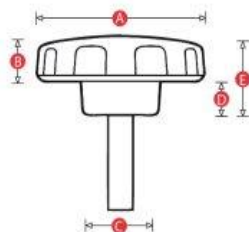
Type	Code	A	B	C	D	E	Thread	Length
Male: Plated Steel	1260/M	38	12	18	8	20	M6	20 25
	1261/M	50	13	21	12	25	M8	25 30
	1262/M	60	14	24	14	28	M10	30 40
	1263/M	80	17	29	17	34	M12	40 50

Material: Duroplast - gloss finish



Type	Code	A	B	C	D	E	Thread
Female: Brass Insert	1265	32	11	18	8	19	M5 M6
	1266	44	13	24	8	21	M6 M8
	1267	57	15	25	12	27	M8 M10
	1268	70	18	28	14	32	M10 M12

Material: Duroplast - gloss finish



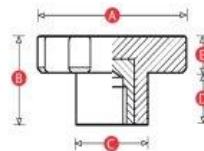
Type	Code	A	B	C	D	E	Thread	Length
Male: Plated Steel	1265/M	32	11	18	8	19	M6	20 25
	1266/M	44	13	24	8	21	M8	25 30
	1267/M	57	15	25	12	27	M10	30 40
	1268/M	70	18	28	14	32	M12	40 50

Material: Duroplast - gloss finish



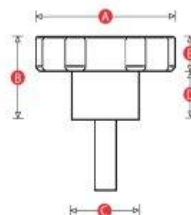
Type	Code	A	B	C	D	E	Thread
Female: Brass Insert	141	50	29	25	17	12	M6 M8 M10
	142	75	44	35	27	17	M10 M12

Material: Duroplast - gloss finish



Type	Code	A	B	C	D	E	Thread	Length
Male: Plated Steel	141/M	50	29	25	17	12	M6	18 30
							M8	25 40
	142/M	75	44	35	27	17	M10	40
							M12	40

Material: Duroplast - gloss finish





1. Select the required socket head cap screw - from M3 to M10.



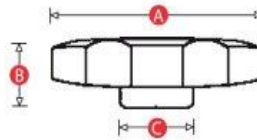
2. Select the knob type and size to suit your application.



3. Select a simple assembly method - no special tools or glue required.



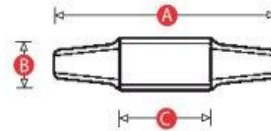
4. Your instant thumb-screw is ready for use.



Code	A	B	C	To fit socket head cap screw
SSR1	38	12	14	M6 1/4
SSR2	38	10	17	M8 5/16
SSR3	38	13	20	M10 3/8

Material: Acetal thermoplastic

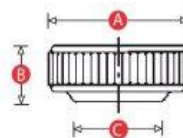
* All sizes available in Black, Red and Grey



Code	A	B	C	To fit socket head cap screw
SST1	26	7	12	M5 #10
SST2	30	8	13	M6 1/4
SST3	38	10	17	M8 5/16
SST4	45	12	20	M10 3/8

Material: Acetal thermoplastic

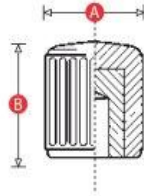
* All sizes available in Black, Red and Grey



Code	A	B	C	To fit socket head cap screw
SSK1	10	4	8	M3 #6
SSK2	13	5	10	M4 #8
SSK3	16	6	12	M5 #10
SSK4	19	8	14	M6 1/4
SSK5	26	8	14	M6 1/4
SSK6	26	10	16	M8 5/16

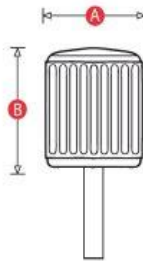
Material: Acetal thermoplastic

* All sizes available in Black, Red and Grey



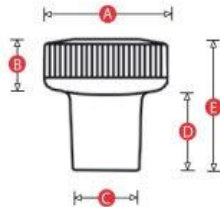
Type	Code	A	B	Thread
Female: Brass Insert	501	15	16	M4 M5 M6
	502	20	22	M5 M6
	503	25	34	M6 M8

Material: Thermoplastic - matt finish



Type	Code	A	B	Thread	Length
Male: Plated Steel	501/M	15	16	M4	10
				M5	10 20
				M6	10 15
	502/M	20	22	M5	15
				M6	15 25
	503/M	25	34	M6	25
			M8	25	

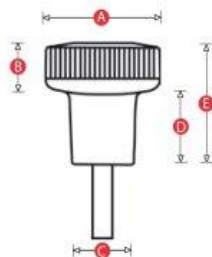
Material: Thermoplastic - matt finish



Type	Code	A	B	C	D	E	Thread
Female: Brass Insert	1650	20	10	12	10	20	M4 M5 M6
	1651	25	10	14	15	25	M6 M8
	1652	30	11	15	19	30	M6 M8

Material: High impact resistant thermoplastic - matt finish

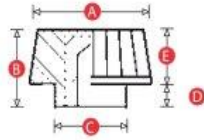
* Standard colour: - Graphite Grey



Type	Code	A	B	C	D	E	Thread	Length
Male: Plated Steel	1650/M	20	10	12	10	20	M4	10 16
							M5	10 16 20
							M6	10 16 20
	1651/M	25	10	14	15	25	M6	16 25 30
							M8	16 25 30
	1652/M	30	11	15	19	30	M6	25 30
M8							25 30 40	

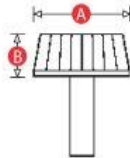
Material: High impact resistant thermoplastic - matt finish

* Standard colour: - Graphite Grey



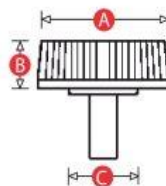
Type	Code	A	B	C	D	E	Thread
Female: Brass Insert	781	15	11	10	3	8	M4 M5 M6
	7810	19	12	12	3	9	M5 M6
	7811	22	16	14	5	11	M6 M8
	782	25	18	15	5	13	M6 M8

Material: High impact resistant thermoplastic - matt finish



Type	Code	A	B	Thread	Length
Male: Plated Steel	781/M	15	8	M4	10, 15
				M5	
				M6	
	7810/M	19	9	M6	10, 15
				M8	
	7811/M	22	11	M6	10, 15, 20
				M8	
	782/M	25	13	M6	10, 15, 20
M8					

Material: High impact resistant thermoplastic - matt finish



Type	Code	A	B	C	Thread	Length
Male: Plated Steel	1472/M	21	9	10	M5	10, 20
					M6	15, 20

Material: High impact resistant thermoplastic - matt finish



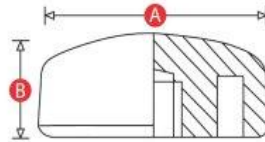
Slug Nut



RENKOL

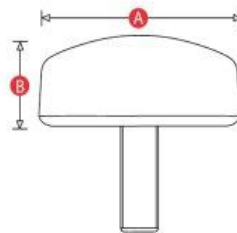
Knobs

22



Type	Code	A	B	Thread
Female: Brass Insert	1708	26	13	M5 M6
	1709	32	15	M6 M8
	1710	40	17	M8 M10

Material: High impact resistant thermoplastic - matt finish

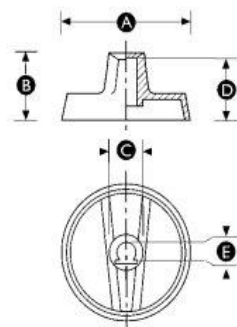


Type	Code	A	B	Thread	Length
Male: Plated Steel	1708/M	26	13	M5	10 16
				M6	10 16
	1709/M	32	15	M6	10 16 20 25
	1710/M	40	17	M8	16 25 40

Material: High impact resistant thermoplastic - matt finish



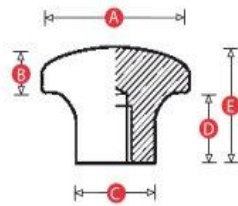
Timer Control Knob



Type	Code	A	B	C	D	E	D-shaft diameter (mm)
Fitted with clip to suit 'D' shaft	1535	40	20	11	18	4.6	6

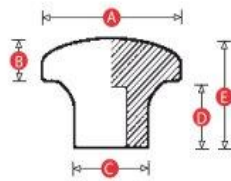
Material: Thermoplastic - matt finish

* N.B. Arrows or numbers can be printed on this part



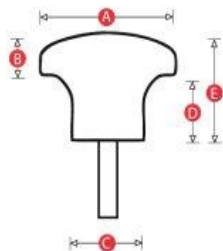
Type	Code	A	B	C	D	E	Thread
Female: Moulded Thread	7222	22	7	12	12	19	M5 M6
	7227	27	7	14	13	20	M6 M8
	7232	32	8	15	15	23	M8 M10
	7237	37	8	18	17	25	M8 M10

Material: High impact resistant thermoplastic - matt finish



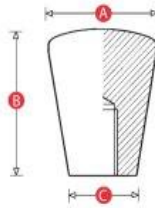
Type	Code	A	B	C	D	E	Shaft Diameter (mm) (h9 tolerance)
Self Fixing: Knock on assembly onto a radiused plain shaft	7222/SF	22	7	12	12	19	5
	7227/SF	27	7	14	13	20	6
	7232/SF	32	8	15	15	23	8
	7237/SF	37	8	18	17	25	10

Material: High impact resistant thermoplastic - matt finish



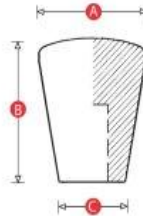
Type	Code	A	B	C	D	E	Thread	Length
Male: Plated Steel	7222/M	22	7	12	12	19	M5	10
							M6	15
	7227/M	27	7	14	13	20	M6	15
							M8	25
	7232/M	32	8	15	15	23	M8	25
							M10	30
	7237/M	37	8	18	17	25	M8	25
							M10	30

Material: High impact resistant thermoplastic - matt finish



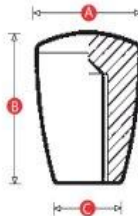
Type	Code	A	B	C	Thread
Female: Moulded Thread	1031	22	30	12	M6 M8
	1032	28	35	18	M8 M10
	1033	35	44	22	M10 M12

Material: Duroplast - gloss finish



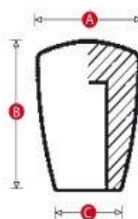
Type	Code	A	B	C	To fit shaft diameter (mm) (h9 tolerance)
Self Fixing: Knock on assembly onto radiused plain shaft	1031/SF	22	30	12	6
	1032/SF	28	35	18	8
	1033/SF	35	44	22	10

Material: Duroplast - gloss finish



Type	Code	A	B	C	Thread
Female: Moulded Thread	2029	15	20	10	M5 M6
	2031	18	25	12	M6 M8
	2032	24	33	16	M8 M10
	20325	28	38	18	M8 M10
	2033	31	43	21	M10 M12

Material: High impact resistant thermoplastic - matt finish



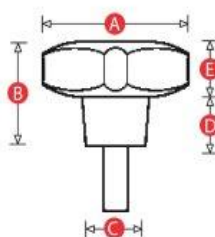
Type	Code	A	B	C	Shaft diameter (mm) (h9 tolerance)
Self Fixing: Knock on assembly onto radiused plain shaft	2029/SF	15	20	10	5
	2031/SF	18	25	12	6
	2032/SF	24	33	16	8 10
	20325/SF	28	38	18	10
	2033/SF	31	43	21	10 12

Material: High impact resistant thermoplastic - matt finish



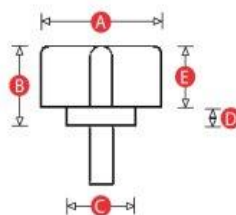
Type	Code	A	B	C	D	E	Thread	Length
Male: Plated Steel	1481/M	25	17	12	10	7	M4	10 20
							M5	10 20

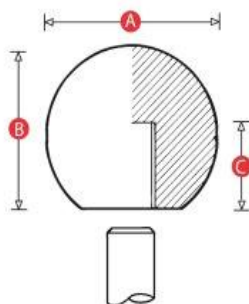
Material: High impact resistant thermoplastic - matt finish



Type	Code	A	B	C	D	E	Thread	Length
Male: Plated Steel	1341/M	21	14	11	4	10	M5	10 20
							M6	10 20

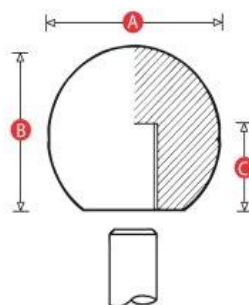
Material: High impact resistant thermoplastic - matt finish





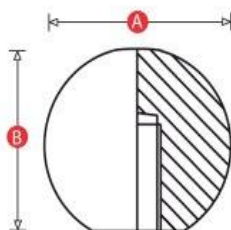
Type	Code	A	B	C	To fit shaft diameter (h9 tolerance)
Female Imperial Shafts	KB3/075	19	17	12	3/16 inch
	KB4/075	19	17	12	1/4 inch
	KB4/100	25	23	15	1/4 inch
	KB5/100	25	23	15	5/16 inch
	KB4/125	32	30	17	1/4 inch
	KB5/125	32	30	15	5/16 inch
	KB6/125	32	30	20	3/8 inch
	KB6/150	38	36	20	3/8 inch
	KB8/150	38	36	20	1/2 inch
	KB8/175	44	43	20	1/2 inch
	KB10/175	44	43	23	5/8 inch
	KB8/200	51	49	20	1/2 inch
KB10/200	51	49	23	5/8 inch	

Material: Duroplast - gloss finish



Type	Code	A	B	C	To fit shaft diameter (mm) (h9 tolerance)
Female Metric Shafts	MK5/075	19	17	13	5 mm
	MK6/075	19	17	13	6 mm
	MK6/100	25	23	16	6 mm
	MK8/100	25	23	15	8 mm
	MK6/125	32	30	16	6 mm
	MK8/125	32	30	15	8 mm
	MK10/125	32	30	19	10 mm
	MK10/150	38	36	19	10 mm
	MK12/150	38	36	20	12 mm
	MK12/175	44	43	20	12 mm
	MK16/175	44	43	23	16 mm
	MK12/200	51	49	20	12 mm
	MK16/200	51	49	23	16 mm

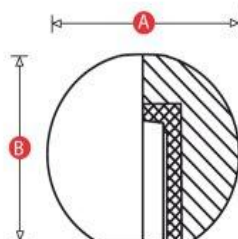
Material: Duroplast - gloss finish



Type	Code	A	B	Metric Thread	Whitworth Thread (inches)
Moulded Thread	300	16	15	M4	3/16 W
				M5	
				M6	
	301	19	17	M4	1/4 W
				M5	
				M6	
	302	25	23	M6	1/4 W
				M8	
				M10	
	303	32	30	M6	5/16 W
				M8	
				M10	3/8 W
				M12	
	304	38	36	M6	3/8 W
				M8	
				M10	1/2 W
				M12	
	305	44	43	M10	3/8W
M12				1/2 W	
M16					
306	51	49	M10	1/2 W	
			M12		
			M16	5/8W	

Material: Duroplast - smooth finish

* Also available in dark red, other colours available on request



Type	Code	A	B	Metric Thread
Brass insert	351	25	23	M6
				M8
	352	32	30	M6
				M8
				M10
	353	38	36	M8
				M10
				M10
	354	44	43	M10
				M12
	355	51	49	M12
				M16

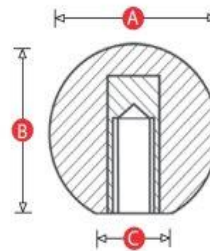
Material: Duroplast - gloss finish - smooth finish

* Also available in dark red, other colours available on request



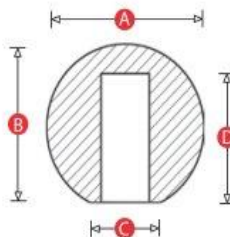
Type	Code	A	B	C	Thread
Female: Brass Insert	451	25	23	13	M6 M8
	452	32	30	14	M6 M8
	453	38	36	18	M8 M10

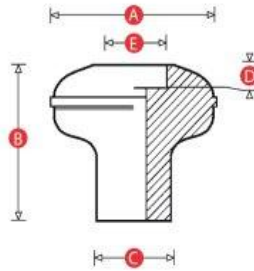
Material: High impact resistant thermoplastic - matt finish



Type	Code	A	B	C	D	To fit shaft diameter (mm) (h9 tolerance)	To fit shaft diameter (inches) (h9 tolerance)
Female: Moulded Bore	402/SF	25	23	13	17	6 8	1/4 5/16
	403/SF	32	30	14	24	8 10	5/16 3/8
	404/SF	38	36	18	27	10 12	3/8 1/2

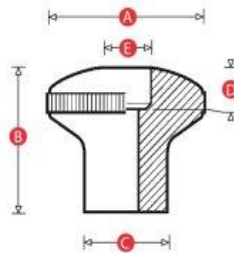
Material: High impact resistant thermoplastic - matt finish





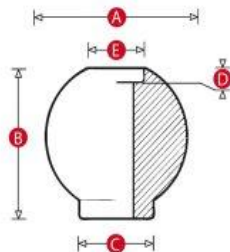
Type	Code	A	B	C	D	E	Clearance bore
Moulded clearance bore	181	48	45	22	6	20	8 10

Material: Duroplast - gloss finish



Type	Code	A	B	C	D	E	Clearance bore
Moulded clearance bore	1208	50	44	26	8	12	8 10

Material: Duroplast - gloss finish



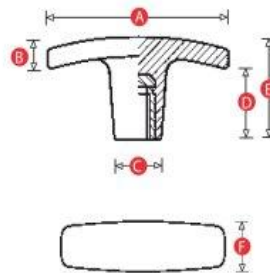
Type	Code	A	B	C	D	E	Clearance bore
Moulded clearance bore	944	50	51	28	4	21	10 12

Material: Duroplast - gloss finish



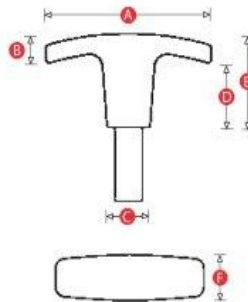
Type	Code	A	B	C	D	E	F	Thread
Female: Brass Insert	3740	40	10	13	20	30	13	M5
	3750	50	9	14	16	25	16	M5
	3760	60	9	16	23	32	18	M6
	3772	71	15	18	19	34	19	M8 M10
	3780	80	14	26	26	40	27	M10 M12

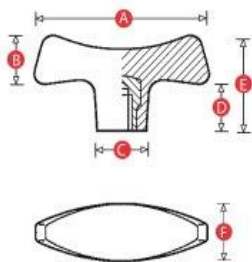
Material: High impact resistant thermoplastic - matt finish



Type	Code	A	B	C	D	E	F	Thread	Length
Male: Plated Steel	3740/M	40	10	13	20	30	13	M5	15
	3750/M	50	9	14	16	25	16	M5	15 20
	3760/M	60	9	16	23	32	18	M6	20 25
	3772/M	71	15	18	19	34	19	M8	20 30
								M10	20 30
	3780/M	80	14	26	26	40	27	M10	30
								M12	40

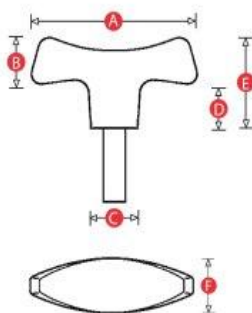
Material: High impact resistant thermoplastic - matt finish





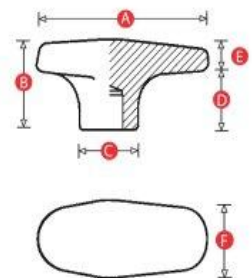
Type	Code	A	B	C	D	E	F	Thread
Female: Brass Insert	1462	72	21	21	21	42	23	M8 M10

Material: Duroplast - matt finish



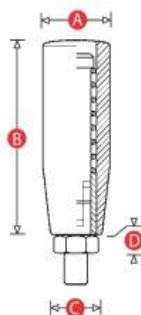
Type	Code	A	B	C	D	E	F	Thread	Length
Male: Plated Steel	1462/M	72	21	21	21	42	23	M8	25
								M10	35

Material: Duroplast - matt finish



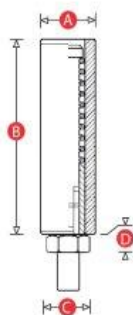
Type	Code	A	B	C	D	E	F	Thread
Female: Moulded thread	1345	60	30	20	18	12	25	M6 M8
	1346	80	30	22	18	12	30	M8 M10
	1347	100	35	25	20	15	32	M10 M12

Material: Duroplast - gloss finish



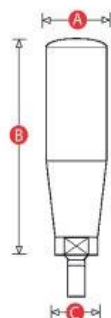
Type	Code	A	B	C	D	Thread	Length
Male plated steel stud	3250/M	20	50	14	6	M6	9
	3270/M	25	70	20	6	M8	10

Material: High impact resistant thermoplastic - matt finish



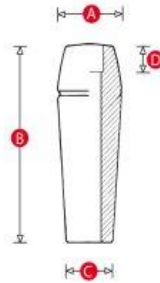
Type	Code	A	B	C	D	Thread	Length
Male plated steel stud	3282/M	25	82	25	7	M10	17
	3290/M	25	90	25	7	M10	17

Material: High impact resistant thermoplastic - matt finish



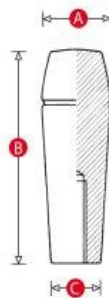
Type	Code	A	B	C	Thread	Length
Male plated steel stud	3155/M	20	55	12	M6	12
	3167/M	23	67	18	M8	15
	3177/M	25	77	18	M8 M10	15
	3187/M	27	87	20	M10 M12	15
	3197/M	29	97	20	M10 M12	15

Material: high impact resistant thermoplastic - matt finish



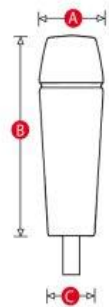
Type	Code	A	B	C	D	Clearance Bore
Moulded Clearance Bore	1303/S	18	40	12	8	5 6
	1304/S	20	60	14	8	6 8
	1305/S	24	80	18	13	8 10
	1306/S	28	95	20	13	10 12
	1307/S	30	110	22	15	10 12

Material: Duroplast - gloss finish



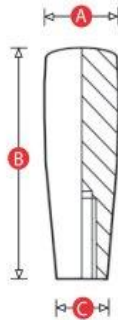
Type	Code	A	B	C	Thread
Female Moulded Thread	1303/F	18	40	12	M6 M8
	1304/F	20	60	14	M6 M8
	1305/F	24	80	18	M6 M8
	1306/F	28	95	20	M10 M12
	1307/F	30	110	22	M10 M12

Material: Duroplast - gloss finish



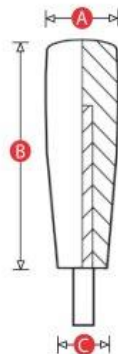
Type	Code	A	B	C	Male thread	Length
Male: Plated Steel	1303/M	18	40	12	M6	10
	1304/M	20	60	14	M6	12
					M8	12
	1305/M	24	80	18	M6	15
					M8	15
	1306/M	28	95	20	M10	20
	1307/M	30	110	22	M10	20
M12					20	

Material: Duroplast - gloss finish



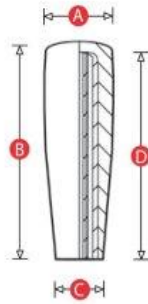
Type	Code	A	B	C	Thread
Female Moulded thread	2303	18	40	15	M6
	2304	21	50	17	M8
	2305	23	65	19	M10
	2306	26	80	21	M12
	2307	28	90	22	M12

Material: High impact resistant thermoplastic - matt finish



Type	Code	A	B	C	Thread	Length
Male: Plated steel	2303/M	18	40	15	M6	10
	2304/M	21	50	17	M8	12
	2305/M	23	65	19	M10	15
	2306/M	26	80	21	M12	20
	2307/M	28	90	22	M12	20

Material: High impact resistant thermoplastic - matt finish



Type	Code	A	B	C	D	To fit shaft diameter (mm) (h9 tolerance)
Self Fixing knock on assembly onto a radiused plain shaft	2303/SF	18	40	15	37	8
	2304/SF	21	50	17	46	10
	2305/SF	23	65	19	61	10
	2306/SF	26	80	21	75	12
	2307/SF	28	90	22	85	16

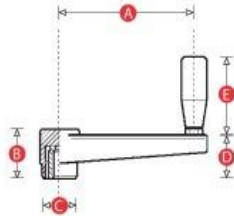
Material: High impact resistant thermoplastic - matt finish



Type	Code	A	Bore - mm (inches)
Push Fit	949	85	19 (3/4 inch)
	950	95	19 (3/4inch)
	951	110	22 (7/8in)
	952	115	25 (1inch)

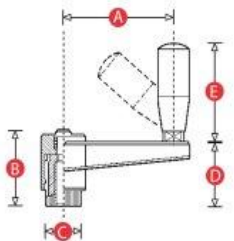
Material: flexible pvc - gloss finish

* Available in red or black



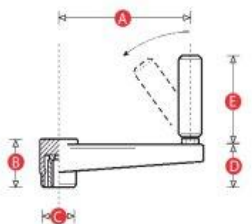
Type	Code	A	B	C	D	E	Thread
Female: Brass insert	5565	65	31	26	32	56	M8 M10 M12
	5580	80	33	30	33	56	M8 M10 M12
	55110	110	39	33	39	76	M10 M12 M14
	55140	140	49	42	50	86	M12 M14 M16
	55185	185	54	46	58	86	M12 M14 M16

Material: High impact resistant thermoplastic - matt finish



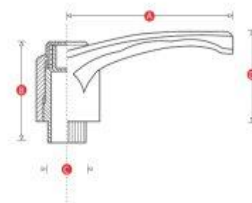
Type	Code	A	B	C	D	E	Thread
Female: Brass insert	5465	65	45	27	36	56	M8 M10 M12
	5480	80	52	34	46	75	M10 M12 M14
	54110	110	52	34	47	75	M12 M14 M16

Material: High impact resistant thermoplastic - matt finish



Type	Code	A	B	C	D	E	Thread
Female: Brass insert	5665	65	31	26	32	56	M8 M10 M12
	5680	80	33	30	33	56	M8 M10 M12
	56110	110	39	33	39	76	M10 M12 M14
	56140	140	49	42	50	90	M12 M14 M16
	56185	185	54	46	58	90	M12 M14 M16

Material: High impact resistant thermoplastic - matt finish

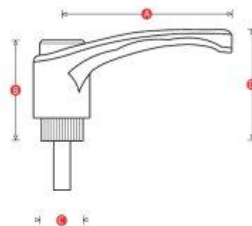


Type	Code	A	B	C	D	Thread
Female: Brass insert	3843	43	29	12	30	M5 M6
	3865	65	38	15	44	M6 M8
	3883	83	47	19	54	M8 M10
	38104	104	56	24	64	M10 M12 M16

Material: High impact resistant thermoplastic - matt finish

Standard **handle colours** black and orange - other colours available on request.

Coloured cap options available: red, yellow, blue, green, white, grey or black.



Type	Code	A	B	C	D	Thread	Length
Male: plated steel	3843/M	43	29	12	30	M5	15 20 25
						M6	15 20 25
	3865/M	65	38	15	44	M8	20 30 40 50
	3883/M	83	47	19	54	M10	30 40 50
	38104/M	104	56	24	64	M12	30 35 50
						M16	35 50

Material: High impact resistant thermoplastic - matt finish

Also with stainless steel male thread on request.

Standard **handle colours** black and orange - other colours available on request.

Coloured cap options available: red, yellow, blue, green, white, grey or black.

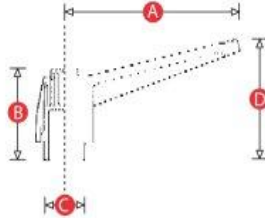


Type	Code	A	B	C	D	Thread
Female Brass insert	2843	43	26	12	32	M5 M6
	2865	65	37	15	46	M6 M8
	2883	83	46	19	57	M8 M10
	28104	104	51	24	68	M10 M12 M16

Material: High impact resistant thermoplastic - matt finish.

Standard handle colours black and orange - other colours available on request.

Coloured cap options available: red, yellow, blue, green, white, grey or black



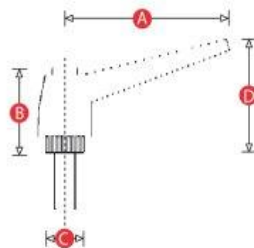
Type	Code	A	B	C	D	Thread	Length
Male: plated steel	2843/M	43	26	12	32	M5	15 20 25
						M6	15 20 25
	2865/M	65	37	15	46	M8	20 30 40 50
	2883/M	83	46	19	57	M10	30 40 50
	28104/M	104	51	24	68	M12	30 35 50
						M16	35 50

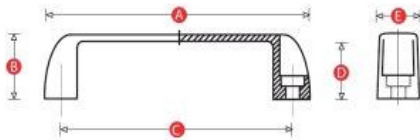
Material: High impact resistant thermoplastic - matt finish

Also available with stainless steel male thread on request

Standard handle colours black and orange - other colours available on request.

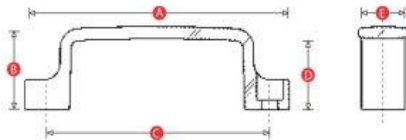
Coloured cap options available: red, yellow, blue, green, white, grey or black





Type	Code	A	B	C	D	E	Clearance Bore	To fit screw head cap screw
Plain Bore - to fit socket head cap screw	4093	111	35	93.5	29	22	6.5	M6
	4117	140	41	117	34	26	8.5	M8
	4132	154	45	132	38	27	8.5	M8
	4179	205	50	179	43	31	8.5	M8
	4225	250	50	225	43	31	8.5	M8

Material: High impact resistant thermoplastic - matt finish



Type	Code	A	B	C	D	E	Clearance bore (mm)	To fit socket head cap screw
Plain Bore - to fit socket head cap screw	3093	110	36	93.5	30	21	6.5	M6
	3117	137	41	117	35	27	8.5	M8
	3132	153	45	132	38	27	8.5	M8
	3179	200	50	179	42	29	8.5	M8

Material: High impact resistant thermoplastic - matt finish



Type	Code	A	B	C	D	E	Clearance bore (mm)	To fit socket head cap screw
Plain Bore - to fit socket head cap screw	1480	134	41	117	35	26	8.5	M8

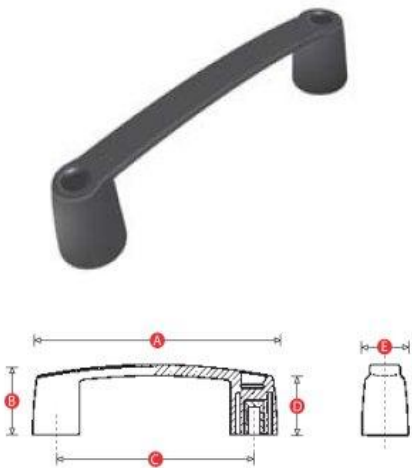
Material: High impact resistant thermoplastic - matt finish



Type	Code	A	B	C	D	E	Clearance Bore	To fit socket head cap screw
Plain Bore - to fit socket head cap screw	2093	119.5	35	93.4	29	26	6.5	M6
	2117	145	40	117	34	29	8.5	M8
	2132	163	45	132	38	31	8.5	M8
	2179	213	50	179	42.5	35	8.5	M8

Material: High impact resistant thermoplastic - matt finish

Coloured cap options available: red, yellow, blue, green, white, grey or black



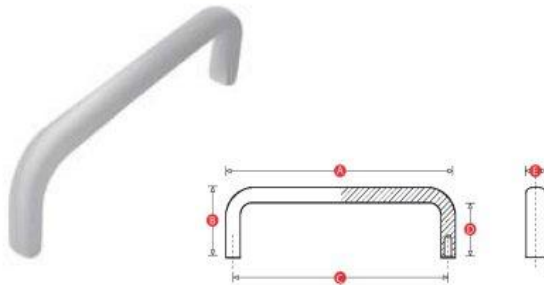
Type	Code	A	B	C	D	E	Thread
Female: Brass insert	2093/F	119.5	35	93.4	29	26	M6 M8
	2117/F	145	40	117	34	29	M6 M8
	2132/F	163	45	132	38	31	M6 M8
	2179/F	213	50	179	42.5	35	M8 M10 M12

Material: High impact resistant thermoplastic - matt finish

Coloured cap options available: red, yellow, blue, green, white, grey or black



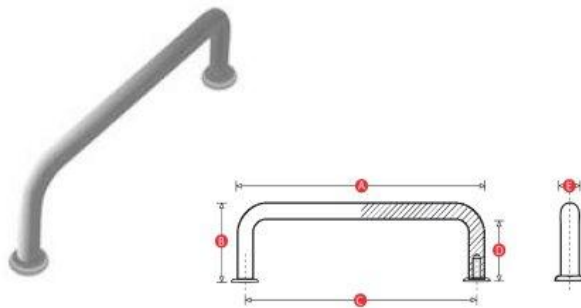
→ Oval Section Handle



Type	Code	A	B	C	D	E	Thread
Threaded - complete with screws and washers	MBH01	63	40	55	32	12	M5
	MBH02	96	40	88	32	12	M5
	MBH03	108	40	100	32	12	M5
	MBH04	128	40	120	32	12	M5
	MBH05	188	40	180	32	12	M5
	MBH06	243	40	235	32	12	M5

Material: Black or silver anodised aluminium - matt finish

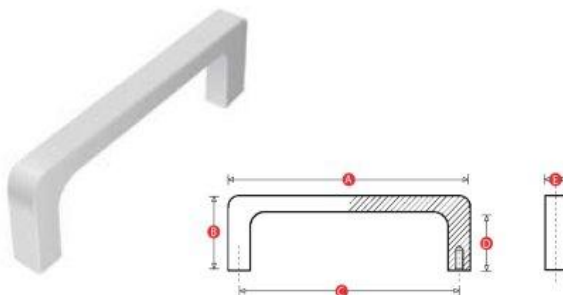
→ Round Section Handle



Type	Code	A	B	C	D	E	Thread
Threaded - complete with nickel plated dress ring, screws and washers	MBHS1	93	24	88	19	5	M3
	MBHS2	96	33	88	25	8	M4
	MBHS3	104	33	96	25	8	M4
	MBHS4	128	33	120	31	8	M4
	MBHS5	130	41	120	31	10	M5
	MBHS6	190	41	180	31	10	M5
	MBHS7	245	41	235	31	10	M5

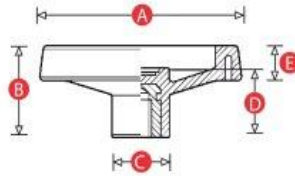
Material: Chrome plated steel

→ Equipment Handle



Type	Code	A	B	C	D	E	Thread
Threaded - complete with screws and washers	MBHR1	67	40	55	32	12	M5
	MBHR2	100	40	88	32	12	M5
	MBHR3	132	40	120	32	12	M5
	MBHR4	192	40	180	32	12	M5
	MBHR5	247	40	235	32	12	M5

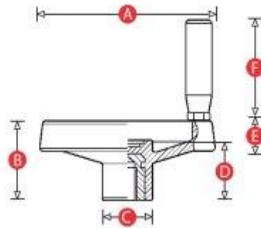
Material: Black anodised aluminium - matt finish



Type	Code	A	B	C	D	E	Pilot bore	Maximum bore
Plated steel insert	91100	100	44	28	33	16	5	16
	91130	130	49	31	35	20	5	16
	91160	160	56	40	40	24	5	20
	91200	200	61	50	40	28	5	20
	91250	250	70	56	44	32	5	20

Material: High impact resistant thermoplastic - matt finish

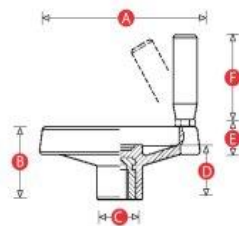
Control Handwheels - Spoked with revolving fixed handle



Type	Code	A	B	C	D	E	F	Pilot bore	Maximum bore
Plated steel insert	92100	100	44	28	33	16	56	5	16
	92130	130	49	31	35	20	66	5	16
	92160	160	56	40	40	24	76	5	20
	92200	200	61	50	40	28	76	5	20
	92250	250	70	56	44	32	92	5	20

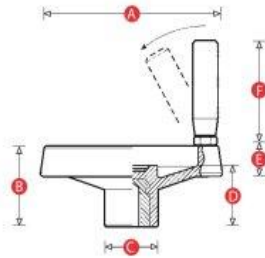
Material: High impact resistant thermoplastic - matt finish

Control Handwheel - Spoked with Revolving Folding Handle



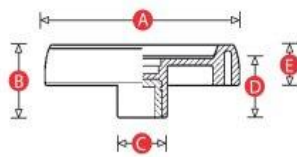
Type	Code	A	B	C	D	E	F	Pilot bore	Maximum bore
Plated steel insert	93130	130	49	31	35	20	76	5	16
	93160	160	56	40	40	24	76	5	20
	93200	200	61	50	40	28	76	5	20
	93250	250	70	56	44	32	96	5	20

Material: High impact resistant thermoplastic - matt finish



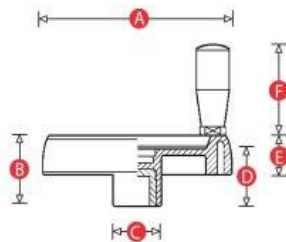
Type	Code	A	B	C	D	E	F	Pilot bore	Maximum bore
Plated steel insert	90130	130	53	31	35	23	60	5	16
	90160	160	59	40	40	26	70	5	20

Material: High impact resistant thermoplastic - matt finish



Type	Code	A	B	C	D	E	Pilot bore	Maximum bore
Plated steel insert	86100	100	39	30	34	21	5	16
	86125	125	44	36	37	24	5	16
	86150	150	53	38	43	29	5	20
	86175	175	56	40	46	32	5	20
	86200	200	59	44	49	35	5	20

Material: High impact resistant thermoplastic - matt finish



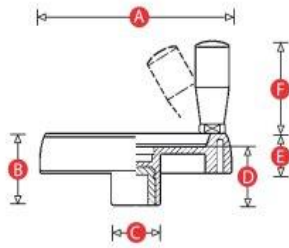
Type	Code	A	B	C	D	E	F	Pilot bore	Maximum bore
Plated steel insert	87100	100	39	30	34	21	55	5	16
	87125	125	44	36	37	24	66	5	16
	87150	150	53	38	43	29	76	5	20
	87175	175	56	40	46	32	86	5	20
	87200	200	59	44	49	35	86	5	20

Material: High impact resistant thermoplastic - matt finish



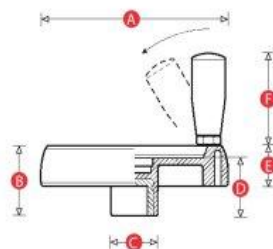
Type	Code	A	B	C	D	E	F	Pilot bore	Maximum bore
Plated steel insert	88100	100	39	30	34	21	55	5	16
	88125	125	44	36	37	24	76	5	16
	88150	150	53	38	43	29	90	5	20
	88175	175	56	40	46	32	98	5	20
	88200	200	59	44	49	35	98	5	20

Material: High impact resistant thermoplastic - matt finish



Type	Code	A	B	C	D	E	F	Pilot bore	Maximum bore
Plated steel insert	89150	150	53	38	43	32	60	5	20
	89175	175	57	40	47	35	70	5	20
	89200	200	60	44	50	38	80	5	20

Material: High impact resistant thermoplastic - matt finish





M WILHELMSEN A/S

