

**M**  
**WILHELMSEN** A/s



# MINIATURE KUGLELEJE KATALOG

Århus

86 150 111

Herlev

44 52 13 52

Vejle

75 820 288

# Indholdsfortegnelse

|  |             |
|--|-------------|
| Nummer system for lejer                                | Side 3      |
| Metric series (Ø 0,6 – 5,0)                            | Side 4 -5   |
| Metric series (Ø 5,0 – 10)                             | Side 6 -7   |
| Inch series (Ø 0,0400 – 0,4375)                        | Side 8 -9   |
| Extra thin metric series: 6700, 6800, 6900 (Ø 10 - 30) | Side 10 -11 |
| Extra thin metric series: 6700, 6800, 6900 (Ø 35 - 90) | Side 12 -13 |
| Thrust series: FM, F                                   | Side 14     |

# Nummer system for lejer

Kugleholder

Stålbånd: J (SPCC, SUS304)  
 Stålkran: W (SUS420J2, SUS304)  
 Nylonkran: TW (POLYAMUDE66)  
 Nittet Stål: RJ (SPCC, SUS304)  
 Thrust FM Type (SUS304)  
 Thrust F Type (C3604)

Tætninger

Teflon tætning med låsering: TSS ( PTFE)  
 Stål tætning med låsering: ZZS  
 Presset stål tætning: ZZ  
 Gummi tætning: 2RS  
 Gummi tætning, viton: 2RS-V  
 Berøringsfri tætning: 2RU

Kugleholder

Stålbånd: J (SPCC, SUS304)  
 Stålkran: W (SUS420J2, SUS304)  
 Nylonkran: TW (POLYAMUDE66)  
 Nittet Stål: RJ (SPCC, SUS304)  
 Thrust FM Type (SUS304)  
 Thrust F Type (C3604)

Radial slør

Standard: C2, C0 (NORMAIL), C3, C4, C5  
 Miniature: MC1, 0 – 5 µ m  
 MC2, 3 – 8 µ m  
 MC3, 5– 10 µ m  
 MC4, 8– 13 µ m  
 MC5, 13 –20 µ m  
 MC6, 20 –2 8 µ m

Standard metrisk

MR, MF, MT Inch serie

|   |    |      |   |    |     |     |     |     |
|---|----|------|---|----|-----|-----|-----|-----|
|   |    | 686  |   | J  | ZZ  | MC3 |     | SRL |
|   | F  | 608  | H | TW | 2RS | MC4 | P6  | SRL |
|   | MR | 52   |   | W  | ZZ  | MC2 | P5  | AF2 |
| S | MF | 128  |   | W  | TTS | MC3 | P6  | SRL |
| S | ER | 1458 |   | W  | ZZS | C0  | A3  | SRL |
|   |    | 6205 | H | RJ | 2RS | C3  |     | AV2 |
|   | F  | 6706 | H | W  | 2RU | C0  |     | SRL |
| S | R  | 144  |   | J  | ZZS | MC4 | A5P | AF2 |
|   | R  | 10   |   | RJ | ZZ  | C2  |     | AV2 |
|   | F  | 3-8M | H | TP |     |     |     | AF2 |

Kugleleje typer

Inch: R  
 Inch med flange: FR  
 Inch med bred inderring: RW  
 Inch bred inderring m. flange: FRW  
 Metric standard: Ingen symbol  
 Metrix med flange: F  
 Special Metric: MR  
 Special Metric med flange: MF  
 Special Metric tynd: ER

Tolerance

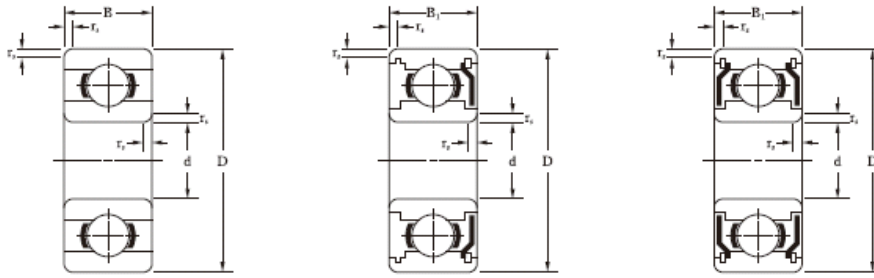
ABEC1: Ingen kod  
 ABEC3: A3  
 ABEC5: A5  
 ABEC7: A7  
 ABEC5P: A5P  
 ABEC7P: A7P  
 ISO grad: Ingen kod  
 ISO grad: P6  
 ISO grad: P5  
 ISO grad: P4

Smørring

Fedt: Kode  
 Multemp: SRL  
 Alvia NO. 2: AV2  
 Isoflex super: SL8  
 Beacon 325 B32  
 Shell cassoda: RL"  
 Molykote44M MxM  
 Krytox 240AC: K24

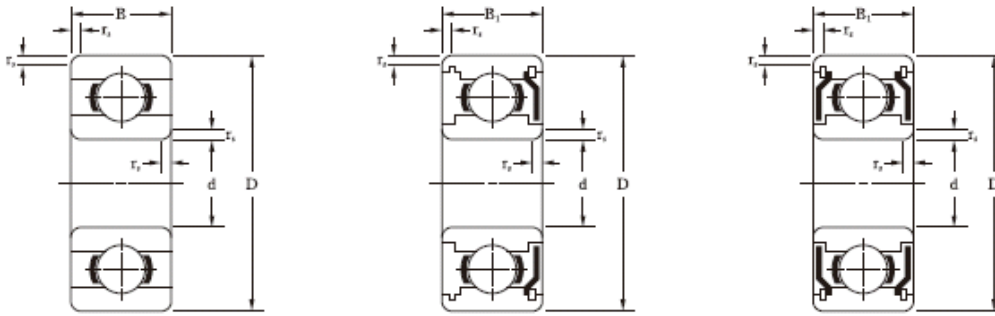
Kugleleje nummer:

# Metric series



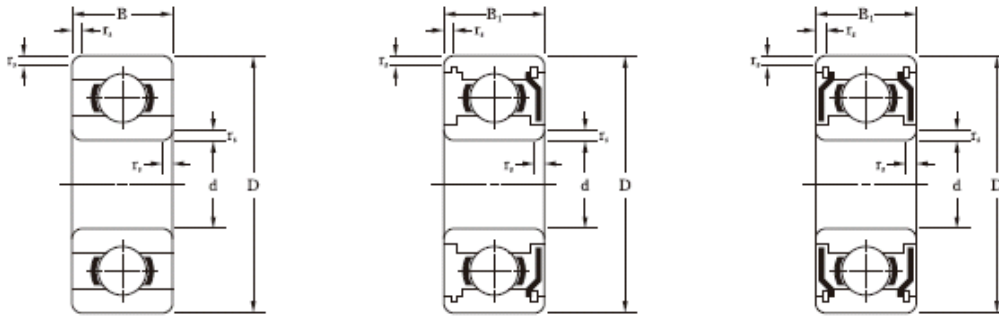
| Bore Diameter:<br>d |        | Outer Diameter:<br>D |        | Flange Diameter:<br>Df |        | Radius:<br>rs (min) |        | Open Bearings |        |                  |        |        | Seal, Shield Bearings |         |               |     |          |      |
|---------------------|--------|----------------------|--------|------------------------|--------|---------------------|--------|---------------|--------|------------------|--------|--------|-----------------------|---------|---------------|-----|----------|------|
| mm                  | inch   | mm                   | inch   | mm                     | inch   | mm                  | inch   | Width: B      |        | Flange Width: BF |        | Open   | Bearing Reference     |         |               |     |          |      |
|                     |        |                      |        |                        |        |                     |        | mm            | inch   | mm               | inch   |        | Flange Open           | Shield  | Flange Shield | 2RS | Seal 2RU | TTS  |
| 0.6                 | 0.0236 | 2.5                  | 0.0984 | -                      | -      | 0.05                | 0.0020 | 1.0           | 0.0394 | -                | -      | 68/0.6 | -                     | -       | -             | -   | -        | -    |
| 1.0                 | 0.0394 | 3                    | 0.1181 | 3.8                    | 0.1496 | 0.05                | 0.0020 | 1.0           | 0.0394 | 0.3              | 0.0118 | 681    | F681                  | -       | -             | -   | -        | -    |
|                     |        | 3                    | 0.1181 | -                      | -      | 0.05                | 0.0020 | 1.5           | 0.0591 | -                | -      | MR31   | -                     | -       | -             | -   | -        | -    |
|                     |        | 4                    | 0.1575 | 5.0                    | 0.1969 | 0.10                | 0.0039 | 1.6           | 0.0630 | 0.5              | 0.0197 | 691    | F691                  | -       | -             | -   | -        | -    |
| 1.2                 | 0.0472 | 4                    | 0.1575 | 4.8                    | 0.1890 | 0.10                | 0.0039 | 1.8           | 0.0709 | 0.4              | 0.0157 | MR41X  | MF41X                 | MR41ZZ  | -             | -   | -        | -    |
| 1.5                 | 0.0591 | 4                    | 0.1575 | 5.0                    | 0.1969 | 0.05                | 0.0020 | 1.2           | 0.0472 | 0.4              | 0.0157 | 681X   | F681X                 | 681XZZ  | F681ZZ        | -   | -        | -    |
|                     |        | 5                    | 0.1969 | 6.5                    | 0.2559 | 0.15                | 0.0059 | 2.0           | 0.0787 | 0.6              | 0.0236 | 691X   | F691X                 | 691XZZ  | F691ZZ        | -   | -        | -    |
|                     |        | 6                    | 0.2362 | 7.5                    | 0.2953 | 0.15                | 0.0059 | 2.5           | 0.0984 | 0.6              | 0.0236 | 601x   | F601X                 | 601XZZ  | F601ZZ        | -   | -        | -    |
| 2.0                 | 0.0787 | 4                    | 0.1575 | -                      | -      | 0.05                | 0.0020 | 1.2           | 0.0472 | -                | -      | 672    | -                     | 672ZZ   | -             | -   | -        | -    |
|                     |        | 5                    | 0.1969 | 6.1                    | 0.2402 | 0.08                | 0.0031 | 1.5           | 0.0591 | 0.5              | 0.0197 | 682    | F682                  | 682ZZ   | F682ZZ        | -   | -        | -    |
|                     |        | 5                    | 0.1969 | 6.2                    | 0.2441 | 0.10                | 0.0039 | 2.0           | 0.0787 | 0.6              | 0.0236 | MR52   | MF52                  | MR52ZZ  | MF52ZZ        | -   | -        | -    |
|                     |        | 6                    | 0.2362 | 7.5                    | 0.2953 | 0.15                | 0.0059 | 2.3           | 0.0906 | 0.6              | 0.0236 | 692    | F692                  | 692ZZ   | F692ZZ        | -   | -        | -    |
|                     |        | 6                    | 0.2362 | 7.2                    | 0.2853 | 0.15                | 0.0059 | 2.5           | 0.0984 | 0.6              | 0.0236 | MR62   | MF62                  | MR62ZZ  | -             | -   | -        |      |
|                     |        | 7                    | 0.2756 | 8.2                    | -      | 0.15                | 0.0059 | 2.5           | 0.0984 | 0.6              | 0.0236 | MR72   | MF72                  | MR72ZZS | MF72XXS       | -   | -        | TTS  |
|                     |        | 7                    | 0.2756 | 8.5                    | -      | 0.15                | 0.0059 | 2.8           | 0.1102 | 0.7              | 0.0276 | 602    | F602                  | 602ZZS  | F602ZZS       | -   | -        | TTS  |
| 2.5                 | 0.0984 | 6                    | 0.2362 | 7.1                    | -      | 0.08                | 0.0031 | 1.8           | 0.0709 | 0.5              | 0.0197 | 682X   | F682X                 | 682XZZ  | F682XZZ       | -   | -        | -    |
|                     |        | 7                    | 0.2756 | 8.5                    | -      | 0.15                | 0.0059 | 2.5           | 0.0984 | 0.7              | 0.0276 | 692    | F692X                 | 692XZZS | F692XZZS      | -   | -        | TTS  |
|                     |        | 8                    | 0.3150 | 9.2                    | -      | 0.20                | 0.0079 | 2.5           | 0.0984 | 0.6              | 0.0236 | MR82X  | MF82X                 | -       | -             | -   | -        | -    |
|                     |        | 8                    | 0.3150 | 9.5                    | -      | 0.15                | 0.0059 | 2.8           | 0.1102 | 0.7              | 0.0276 | 602X   | F602X                 | 602XZZ  | F602X         | -   | -        | -    |
| 3.0                 | 0.1181 | 6                    | 0.2362 | 7.2                    | -      | 0.10                | 0.0039 | 2.0           | 0.0787 | 0.6              | 0.0236 | MR63   | MF63                  | MR63ZZ  | MF63ZZ        | -   | -        | -    |
|                     |        | 7                    | 0.2756 | 8.1                    | -      | 0.10                | 0.0039 | 2.0           | 0.0787 | 0.5              | 0.0197 | 683    | F683                  | 683ZZ   | F683ZZ        | -   | -        | TT-S |
|                     |        | 8                    | 0.3150 | 9.2                    | -      | 0.15                | 0.0059 | 2.5           | 0.0984 | 0.6              | 0.0236 | MR83   | MF83                  | MR83ZZ  | -             | -   | -        |      |
|                     |        | 8                    | 0.3150 | 9.5                    | -      | 0.15                | 0.0059 | 3.0           | 0.1181 | 0.7              | 0.0276 | 693    | F693                  | 693ZZ   | F693ZZ        | 2RS | -        | -    |
|                     |        | 9                    | 0.3543 | 10.2                   | -      | 0.20                | 0.0079 | 2.5           | 0.0984 | 0.6              | 0.0236 | MR93   | MF93                  | MR93ZZ  | MF93ZZ        | -   | -        | -    |
|                     |        | 9                    | 0.3543 | 10.5                   | -      | 0.15                | 0.0059 | 3.0           | 0.1181 | 0.7              | 0.0276 | 603    | F603                  | 603ZZ   | F603ZZ        | -   | -        | -    |
|                     |        | 10                   | 0.3937 | 11.5                   | -      | 0.15                | 0.0059 | 4.0           | 0.1575 | 1.0              | 0.0394 | 623    | F623                  | 623ZZ   | F623ZZ        | 2RS | 2RU      | -    |
|                     |        | 13                   | 0.5118 | -                      | -      | 0.20                | 0.0079 | 5.0           | 0.1969 | -                | -      | 633    | -                     | 633ZZ   | -             | 2RS | 2RU      | -    |
| 4.0                 | 0.1575 | 7                    | 0.2756 | 8.2                    | -      | 0.10                | 0.0039 | 2.0           | 0.0787 | 0.6              | 0.0236 | MR74   | MF74                  | -       | -             | -   | -        | -    |
|                     |        | 7                    | 0.2756 | 8.2                    | -      | 0.10                | 0.0039 | -             | -      | -                | -      | -      | -                     | MR74ZZ  | MF74ZZ        | -   | -        | -    |
|                     |        | 8                    | 0.3150 | 9.2                    | 0.3622 | 0.10                | 0.0039 | 2.0           | 0.0787 | 0.6              | 0.0236 | MR84   | MF84                  | MR84ZZ  | MF84ZZ        | -   | -        | -    |
|                     |        | 9                    | 0.3543 | 10.3                   | 0.4055 | 0.10                | 0.0039 | 2.5           | 0.0984 | 0.6              | 0.0236 | 684    | F684                  | 684ZZ   | F684ZZ        | 2RS | 2RU      | TTS  |
|                     |        | 10                   | 0.3937 | 11.2                   | 0.4409 | 0.15                | 0.0059 | 3.0           | 0.1181 | 0.6              | 0.0236 | MR104  | MF104                 | MR104ZZ | MF104ZZ       | 2RS | 2RU      | -    |
|                     |        | 11                   | 0.4331 | 12.5                   | 0.4921 | 0.15                | 0.0059 | 4.0           | 0.1575 | 1.0              | 0.0394 | 694    | F694                  | 694ZZ   | F694ZZ        | 2RS | 2RU      | -    |
|                     |        | 12                   | 0.4724 | 13.5                   | 0.5315 | 0.20                | 0.0079 | 4.0           | 0.1575 | 1.0              | 0.0394 | 604    | F604                  | 604ZZ   | F604ZZ        | 2RS | 2RU      | -    |
|                     |        | 13                   | 0.5118 | 15.0                   | 0.5906 | 0.20                | 0.0079 | 5.0           | 0.1969 | 1.0              | 0.0394 | 624    | F624                  | 624ZZ   | F624ZZ        | 2RS | 2RU      | -    |
|                     |        | 16                   | 0.6299 | 18.0                   | 0.7087 | 0.30                | 0.0118 | 5.0           | 0.1969 | 1.0              | 0.0394 | 634    | F634                  | 634ZZ   | F634ZZ        | 2RS | 2RU      | TTS  |

# Metric series



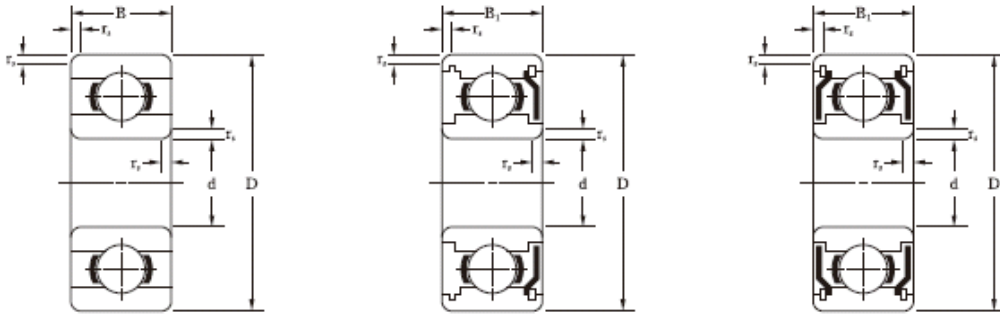
| Width: B1 |        | Flange Width: Bf1 |        | Load Rating |        | Max. Speed |     | Cage Type | Ball Complement |          |        | Weight (Reference) |             |        |               |
|-----------|--------|-------------------|--------|-------------|--------|------------|-----|-----------|-----------------|----------|--------|--------------------|-------------|--------|---------------|
| mm        | inch   | mm                | inch   | Cr(N)       | Cor(N) | Grease     | Oil |           | Qty             | Size: Dw |        | Open               | Flange Open | Shield | Flange Shield |
|           |        |                   |        |             |        | X1000rpm   |     |           |                 | psc      | mm     |                    |             |        |               |
| -         | -      | -                 | -      | 68          | 16     | 142        | 160 | W         | 5               | 0,500    | 0,0197 | 0,02               | -           | -      | -             |
| -         | -      | -                 | -      | 96          | 26     | 130        | 150 | W         | 6               | 0,600    | 0,0236 | 0,03               | 0,04        | -      | -             |
| -         | -      | -                 | -      | 96          | 26     | 130        | 150 | W         | 6               | 0,600    | 0,0236 | 0,05               | -           | -      | -             |
| -         | -      | -                 | -      | 141         | 37     | 100        | 120 | W         | 5               | 0,800    | 0,0315 | 0,11               | 0,14        | -      | -             |
| 2,5       | 0,0984 | -                 | -      | 112         | 33     | 110        | 130 | W         | 7               | 0,600    | 0,0236 | 0,10               | 0,12        | 0,14   | -             |
| 2,0       | 0,0787 | 0,6               | 0,0236 | 112         | 33     | 100        | 120 | W         | 7               | 0,600    | 0,0236 | 0,10               | 0,12        | 0,14   | 0,17          |
| 2,6       | 0,1024 | 0,8               | 0,0315 | 169         | 50     | 85         | 100 | W         | 6               | 1,000    | 0,0394 | 0,20               | 0,26        | 0,25   | 0,33          |
| 3,0       | 0,1181 | 0,8               | 0,0315 | 330         | 99     | 75         | 90  | W         | 6               | 1,200    | 0,0472 | 0,31               | 0,38        | 0,40   | 0,50          |
| 2,0       | 0,0787 | -                 | -      | 124         | 40     | 91         | 104 | W         | 8               | 0,600    | 0,0236 | 0,05               | -           | 0,07   | -             |
| 2,3       | 0,0906 | 0,6               | 0,0236 | 169         | 50     | 85         | 100 | W         | 6               | 0,800    | 0,0315 | 0,15               | 0,19        | 0,20   | 0,24          |
| 2,5       | 0,0984 | 0,6               | 0,0236 | 169         | 50     | 85         | 100 | W         | 6               | 0,800    | 0,0315 | 0,14               | 0,19        | 0,20   | 0,25          |
| 3,0       | 0,1181 | 0,8               | 0,0315 | 330         | 99     | 75         | 90  | W,J,TW    | 6               | 1,200    | 0,0472 | 0,28               | 0,35        | 0,35   | 0,45          |
| 2,5       | 0,0984 | -                 | -      | 330         | 99     | 75         | 90  | W,J       | 6               | 1,200    | 0,0472 | 0,28               | 0,34        | 0,33   | -             |
| 3,0       | 0,1181 | 0,6               | 0,0236 | 386         | 129    | 63         | 75  | W         | 7               | 1,200    | 0,0472 | 0,43               | 0,50        | 0,53   | 0,60          |
| 3,5       | 0,1378 | 0,9               | 0,0354 | 386         | 129    | 60         | 71  | W         | 7               | 1,200    | 0,0472 | 0,50               | 0,60        | 0,60   | 0,73          |
| 2,6       | 0,1024 | 0,8               | 0,0315 | 209         | 74     | 71         | 80  | W         | 8               | 0,800    | 0,0315 | 0,20               | 0,24        | 0,35   | 0,42          |
| 3,5       | 0,1378 | 0,9               | 0,0354 | 386         | 129    | 63         | 75  | W         | 7               | 1,200    | 0,0472 | 0,40               | 0,50        | 0,55   | 0,68          |
| -         | -      | -                 | -      | 558         | 180    | 60         | 67  | W         | 6               | 1,588    | 0,0625 | 0,52               | 0,60        | -      | -             |
| 4,0       | 0,1575 | 0,9               | 0,0354 | 552         | 117    | 60         | 71  | W         | 6               | 1,588    | 0,0625 | 0,61               | 0,72        | 0,85   | 0,99          |
| 2,5       | 0,0984 | 0,6               | 0,0236 | 209         | 74     | 71         | 80  | W         | 8               | 0,800    | 0,0315 | 0,20               | 0,26        | 0,28   | 0,34          |
| 3,0       | 0,1181 | 0,8               | 0,0315 | 311         | 112    | 63         | 75  | W         | 8               | 1,000    | 0,0394 | 0,32               | 0,37        | 0,45   | 0,53          |
| 3,0       | 0,1181 | -                 | -      | 395         | 141    | 60         | 67  | J         | 7               | 1,200    | 0,0472 | 0,51               | 0,59        | 0,67   | -             |
| 4,0       | 0,1575 | 0,9               | 0,0354 | 558         | 180    | 60         | 67  | W,J,TW    | 6               | 1,588    | 0,0625 | 0,60               | 0,71        | 0,80   | 0,94          |
| 4,0       | 0,1575 | 0,8               | 0,0315 | 571         | 189    | 56         | 67  | W         | 6               | 1,588    | 0,0625 | 0,75               | 0,83        | 1,15   | 1,30          |
| 5,0       | 0,1969 | 1,0               | 0,0394 | 571         | 189    | 56         | 67  | W         | 6               | 1,588    | 0,0625 | 0,84               | 0,96        | 1,13   | 1,61          |
| 4,0       | 0,1575 | 1,0               | 0,0394 | 631         | 219    | 50         | 60  | J,TW      | 7               | 1,588    | 0,0625 | 1,45               | 1,65        | 1,65   | 1,85          |
| 5,0       | 0,1969 | -                 | -      | 1301        | 488    | 40         | 48  | J         | 7               | 2,381    | 0,0937 | 3,27               | -           | 3,43   | -             |
| -         | -      | -                 | -      | 311         | 115    | 60         | 67  | W         | 8               | 1,000    | 0,0394 | 0,23               | 0,30        | -      | -             |
| 2,5       | 0,0984 | 0,6               | 0,0236 | 255         | 108    | 60         | 67  | W         | 11              | 0,800    | 0,0315 | -                  | -           | 0,33   | 0,40          |
| 3,0       | 0,1181 | 0,6               | 0,0236 | 395         | 141    | 56         | 67  | W,J,TW    | 7               | 1,200    | 0,0472 | 0,39               | 0,47        | 0,56   | 0,64          |
| 4,0       | 0,1575 | 1,0               | 0,0394 | 641         | 227    | 53         | 63  | W,J,TW    | 7               | 1,588    | 0,0625 | 0,65               | 0,74        | 1,00   | 1,15          |
| 4,0       | 0,1575 | 0,8               | 0,0315 | 711         | 272    | 48         | 56  | J         | 8               | 1,588    | 0,0625 | 0,96               | 1,04        | 1,33   | 1,50          |
| 4,0       | 0,1575 | 1,0               | 0,0394 | 957         | 350    | 48         | 56  | J         | 7               | 2,000    | 0,0787 | 1,69               | 1,91        | 1,75   | 1,97          |
| 4,0       | 0,1575 | 1,0               | 0,0394 | 957         | 350    | 48         | 56  | J         | 7               | 2,000    | 0,0787 | 2,19               | 2,42        | 2,34   | 2,57          |
| 5,0       | 0,1969 | 1,0               | 0,0394 | 1301        | 488    | 40         | 48  | J         | 7               | 2,381    | 0,0937 | 3,10               | 3,44        | 3,20   | 3,54          |
| 5,0       | 0,1969 | 1,0               | 0,0394 | 1340        | 523    | 36         | 43  | J         | 7               | 2,381    | 0,0937 | 5,24               | 5,66        | 5,44   | 5,86          |

# Metric series



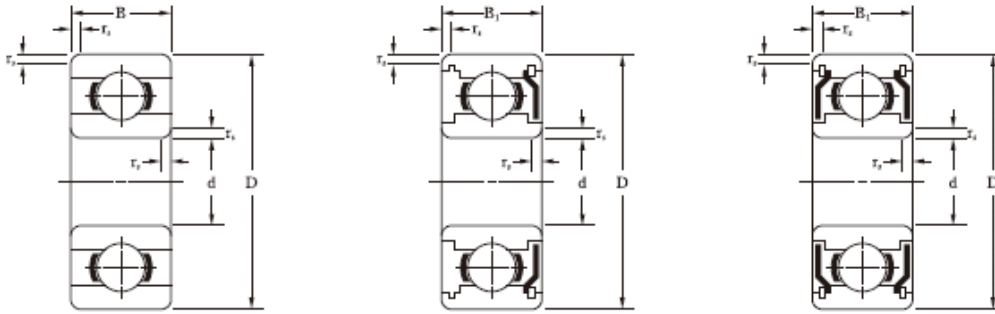
| Bore Diameter:<br>d |        | Outer Diameter:<br>D |        | Flange Diameter:<br>Df |        | Radius:<br>rs (min) |        | Open Bearings |        |                  |        | Seal, Shield Bearings |             |          |               |         |     |      |   |
|---------------------|--------|----------------------|--------|------------------------|--------|---------------------|--------|---------------|--------|------------------|--------|-----------------------|-------------|----------|---------------|---------|-----|------|---|
|                     |        |                      |        |                        |        |                     |        | Width: B      |        | Flange Width: BF |        | Open                  | Flange Open | Shield   | Flange Shield |         |     | Seal |   |
| mm                  | inch   | mm                   | inch   | mm                     | inch   | mm                  | inch   | mm            | inch   | mm               | inch   |                       |             |          | 2RS           | 2RU     | TTS |      |   |
| 5,0                 | 0,1969 | 8                    | 0,3150 | 9,2                    | 0,3622 | 0,10                | 0,0039 | 2,0           | 0,0787 | 0,6              | 0,0236 | MR85                  | MF85        | -        | -             | -       | -   |      |   |
|                     |        | 8                    | 0,3150 | 9,2                    | 0,3622 | 0,10                | 0,0039 | -             | -      | -                | -      | -                     | -           | MR85ZZ   | MF85ZZ        | -       | -   | TTS  |   |
|                     |        | 9                    | 0,3543 | 10,2                   | 0,4016 | 0,15                | 0,0059 | 2,5           | 0,0984 | 0,6              | 0,0236 | MR95                  | MF95        | MR95ZZS  | MF95ZZS       | -       | -   | TTS  |   |
|                     |        | 10                   | 0,3937 | 11,2                   | 0,4409 | 0,15                | 0,0059 | 3,0           | 0,1181 | 0,6              | 0,0236 | MR105                 | MF105       | MR105ZZ  | MF105ZZ       | 2RS     | 2RU | -    |   |
|                     |        | 11                   | 0,4331 | 12,6                   | 0,4961 | 0,15                | 0,0059 | -             | -      | -                | -      | -                     | -           | -        | MR115ZZ       | MF115ZZ | 2RS | 2RU  | - |
|                     |        | 11                   | 0,4331 | 12,5                   | 0,4921 | 0,15                | 0,0059 | 3,0           | 0,1181 | 0,8              | 0,0315 | 685                   | F685        | 685ZZ    | F686ZZ        | 2RS     | 2RU | -    |   |
|                     |        | 13                   | 0,5118 | 15,0                   | 0,5906 | 0,20                | 0,0079 | 4,0           | 0,1575 | 1,0              | 0,0394 | 695                   | F695        | 695ZZ    | F695ZZ        | 2RS     | 2RU | TTS  |   |
|                     |        | 14                   | 0,5512 | 16,0                   | 0,6299 | 0,20                | 0,0079 | 5,0           | 0,1969 | 1,0              | 0,0394 | 605                   | F605        | 605ZZ    | F605ZZ        | 2RS     | 2RU | -    |   |
|                     |        | 16                   | 0,6299 | 18,0                   | 0,7087 | 0,30                | 0,0118 | 5,0           | 0,1969 | 1,0              | 0,0394 | 625                   | F625        | 625ZZ    | F625ZZ        | 2RS     | 2RU | TTS  |   |
|                     |        | 19                   | 0,7480 | 22,0                   | 0,8661 | 0,30                | 0,0118 | 6,0           | 0,2362 | 1,5              | 0,0591 | 635                   | F635        | 635ZZ    | F635ZZ        | 2RS     | 2RU | -    |   |
| 6,0                 | 0,2362 | 10                   | 0,3937 | 11,2                   | 0,4409 | 0,15                | 0,0059 | 2,5           | 0,0984 | 0,6              | 0,0236 | MR106                 | MF106       | -        | -             | -       | -   |      |   |
|                     |        | 10                   | 0,3937 | 11,2                   | 0,4409 | 0,10                | 0,0039 | -             | -      | -                | -      | -                     | -           | -        | -             | -       | -   | TTS  |   |
|                     |        | 12                   | 0,4724 | 13,2                   | 0,5197 | 0,15                | 0,0059 | 3,0           | 0,1181 | 0,6              | 0,0236 | MR126                 | MF126       | MR106ZZ  | MF106ZZ       | -       | -   | TTS  |   |
|                     |        | 13                   | 0,5118 | 15,0                   | 0,5906 | 0,15                | 0,0059 | 3,5           | 0,1378 | 1,0              | 0,0394 | 686                   | F686        | 686ZZ    | F686ZZ        | 2RS     | 2RU | TTS  |   |
|                     |        | 15                   | 0,5906 | 17,0                   | 0,6693 | 0,20                | 0,0079 | 5,0           | 0,1969 | 1,2              | 0,0472 | 696                   | F696        | 696ZZ    | F696ZZ        | 2RS     | 2RU | TTS  |   |
|                     |        | 16                   | 0,6299 | -                      | -      | 0,20                | 0,0079 | 5,0           | 0,1969 | -                | -      | -                     | -           | 696AZZ   | -             | 2RS     | 2RU | -    |   |
|                     |        | 17                   | 0,6693 | 19,0                   | 0,7480 | 0,30                | 0,0118 | 6,0           | 0,2362 | 1,2              | 0,0472 | 606                   | F606        | 606ZZ    | F606ZZ        | 2RS     | 2RU | -    |   |
|                     |        | 19                   | 0,7480 | 22,0                   | 0,8661 | 0,30                | 0,0118 | 6,0           | 0,2362 | 1,5              | 0,0591 | 626                   | F626        | 626ZZ    | F626ZZ        | 2RS     | 2RU | TTS  |   |
|                     |        | 22                   | 0,8661 | -                      | -      | 0,30                | 0,0118 | 7,0           | 0,2756 | -                | -      | 636                   | -           | 636ZZ    | -             | 2RS     | 2RU | -    |   |
|                     |        | 7,0                  | 0,2756 | 11                     | 0,4331 | 12,2                | 0,4803 | 0,15          | 0,0059 | 2,5              | 0,0984 | 0,6                   | 0,0236      | MR117    | MF117         | -       | -   | -    | - |
| 11                  | 0,4331 |                      |        | 12,2                   | 0,4803 | 0,10                | 0,0039 | -             | -      | -                | -      | -                     | -           | -        | -             | -       | -   | TTS  |   |
| 13                  | 0,5118 |                      |        | 14,2                   | 0,5591 | 0,15                | 0,0059 | 3,0           | 0,1378 | 0,6              | 0,0236 | MR137                 | MF137       | MR117ZZS | MF117ZZS      | -       | -   | TTS  |   |
| 14                  | 0,5512 |                      |        | 16,0                   | 0,6299 | 0,15                | 0,0059 | 3,5           | 0,1575 | 1,0              | 0,0394 | 687                   | F687        | 687ZZ    | F687ZZ        | 2RS     | 2RU | TTS  |   |
| 17                  | 0,6693 |                      |        | 19,0                   | 0,7480 | 0,30                | 0,0118 | 5,0           | 0,2362 | 1,2              | 0,0472 | 697                   | F697        | 697ZZ    | F697ZZ        | 2RS     | 2RU | TTS  |   |
| 19                  | 0,7480 |                      |        | 22,0                   | 0,8661 | 0,30                | 0,0118 | 6,0           | 0,2756 | 1,5              | 0,0591 | 607                   | F607        | 607ZZ    | F607ZZ        | 2RS     | 2RU | TTS  |   |
| 22                  | 0,8661 |                      |        | 25,0                   | 0,9843 | 0,30                | 0,0118 | 7,0           | 0,3150 | 1,5              | 0,0591 | 627                   | F627        | 627ZZ    | F627ZZ        | 2RS     | 2RU | TTS  |   |
| 26                  | 1,0236 |                      |        | -                      | -      | 0,30                | 0,0118 | 9,0           | 0,3543 | -                | -      | 637                   | -           | 637ZZ    | -             | 2RS     | 2RU | -    |   |
| 8,0                 | 0,3150 | 12                   | 0,4724 | 13,2                   | 0,5197 | 0,15                | 0,0059 | 2,5           | 0,0984 | 0,6              | 0,0236 | MR128                 | MF128       | -        | -             | -       | -   |      |   |
|                     |        | 12                   | 0,4724 | 13,2                   | 0,5197 | 0,10                | 0,0039 | -             | -      | -                | -      | -                     | -           | -        | -             | -       | -   | TTS  |   |
|                     |        | 14                   | 0,5512 | 15,6                   | 0,6142 | 0,15                | 0,0059 | 3,5           | 0,1378 | 0,8              | 0,0315 | MR148                 | MF148       | MR128ZZ  | MF128ZZ       | -       | -   | TTS  |   |
|                     |        | 16                   | 0,6299 | 18,0                   | 0,7087 | 0,20                | 0,0079 | 4,0           | 0,1575 | 1,0              | 0,0394 | 688                   | F688        | 688ZZ    | F688ZZ        | 2RS     | 2RU | TTS  |   |
|                     |        | 19                   | 0,7480 | 22,0                   | 0,8661 | 0,30                | 0,0118 | 6,0           | 0,2362 | 1,5              | 0,0591 | 698                   | F698        | 698ZZ    | F698ZZ        | 2RS     | 2RU | TTS  |   |
|                     |        | 22                   | 0,8661 | 25,0                   | 0,9843 | 0,30                | 0,0118 | 7,0           | 0,2756 | 1,5              | 0,0591 | 608                   | F608        | 608ZZ    | F608ZZ        | 2RS     | 2RU | TTS  |   |
|                     |        | 24                   | 0,9449 | -                      | -      | 0,30                | 0,0118 | 8,0           | 0,3150 | -                | -      | 628                   | -           | 628ZZ    | -             | 2RS     | 2RU | -    |   |
|                     |        | 28                   | 1,1024 | -                      | -      | 0,30                | 0,0118 | 9,0           | 0,3543 | -                | -      | 638                   | -           | 638ZZ    | -             | 2RS     | 2RU | -    |   |
| 9,0                 | 0,3543 | 14                   | 0,5512 | 15,5                   | 0,6102 | 0,10                | 0,0039 | 3,0           | 0,1181 | 0,8              | 0,0315 | 679                   | F679        | 679ZZS   | F679ZZS       | -       | -   | TTS  |   |
|                     |        | 17                   | 0,6693 | 19,0                   | 0,7480 | 0,20                | 0,0079 | 4,0           | 0,1575 | 1,0              | 0,0394 | 689                   | F689        | 689ZZ    | F689ZZ        | 2RS     | 2RU | -    |   |
|                     |        | 20                   | 0,7874 | 23,0                   | 0,9055 | 0,30                | 0,0118 | 6,0           | 0,2362 | 1,5              | 0,0591 | 699                   | F699        | 699ZZ    | F699ZZ        | 2RS     | 2RU | -    |   |
|                     |        | 24                   | 0,9449 | 27,0                   | 1,0630 | 0,30                | 0,0118 | 7,0           | 0,2756 | 1,5              | 0,0591 | 609                   | F609        | 609ZZ    | F609ZZ        | 2RS     | 2RU | -    |   |
|                     |        | 26                   | 1,0236 | -                      | -      | 0,60                | 0,0236 | 8,0           | 0,3150 | -                | -      | 639                   | -           | 629ZZ    | -             | 2RS     | 2RU | -    |   |
|                     |        | 30                   | 1,1811 | -                      | -      | 0,60                | 0,0236 | 10,0          | 0,3937 | -                | -      | 639                   | -           | 639ZZ    | -             | 2RS     | 2RU | -    |   |

# Metric series



| Width: B1 |        | Flange Width: Bf1 |        | Load Rating |        | Max. Speed |     | Cage Type | Ball Complement |          |        | Weight (Reference) |             |        |               |
|-----------|--------|-------------------|--------|-------------|--------|------------|-----|-----------|-----------------|----------|--------|--------------------|-------------|--------|---------------|
| mm        | inch   | mm                | inch   | Cr(N)       | Cor(N) | Grease     | Oil |           | Qty             | Size: Dw |        | Open               | Flange Open | Shield | Flange Shield |
|           |        |                   |        |             |        | X1000rpm   |     |           |                 | psc      | mm     |                    |             |        |               |
| -         | -      | -                 | -      | 308         | 120    | 53         | 63  | W         | 8               | 1,000    | 0,0394 | 0,25               | 0,33        | -      | -             |
| 2,5       | 0,0984 | 0,6               | 0,0236 | 218         | 90     | 53         | 63  | W         | 9               | 0,800    | 0,0315 | -                  | -           | 0,34   | 0,42          |
| 3,0       | 0,1181 | 0,6               | 0,0236 | 431         | 169    | 50         | 60  | W         | 8               | 1,200    | 0,0472 | 0,54               | 0,62        | 0,58   | 0,66          |
| 4,0       | 0,1575 | 0,8               | 0,0315 | 431         | 169    | 50         | 60  | W         | 8               | 1,200    | 0,0472 | 0,91               | 1,00        | 1,26   | 1,38          |
| 4,0       | 0,1575 | 0,8               | 0,0315 | 716         | 282    | 45         | 53  | J         | 8               | 1,588    | 0,0625 | -                  | -           | 0,62   | 0,81          |
| 5,0       | 0,1969 | 1,0               | 0,0394 | 716         | 282    | 45         | 53  | J,TW      | 8               | 1,588    | 0,0625 | 1,16               | 1,33        | 1,93   | 2,15          |
| 4,0       | 0,1575 | 1,0               | 0,0394 | 1077        | 432    | 43         | 50  | J         | 8               | 2,000    | 0,0787 | 2,39               | 2,73        | 2,31   | 2,65          |
| 5,0       | 0,1969 | 1,0               | 0,0394 | 1329        | 507    | 40         | 50  | J,TW      | 7               | 2,381    | 0,0937 | 3,46               | 3,83        | 3,75   | 4,12          |
| 5,0       | 0,1969 | 1,0               | 0,0394 | 1729        | 675    | 36         | 43  | J,TW      | 7               | 2,778    | 0,1094 | 4,95               | 5,37        | 5,10   | 5,52          |
| 6,0       | 0,2362 | 1,5               | 0,0591 | 2336        | 896    | 32         | 40  | J,TW      | 6               | 3,500    | 0,1378 | 8,50               | 9,26        | 8,89   | 9,65          |
| 3,0       | 0,1181 | 0,6               | 0,0236 | 496         | 218    | 45         | 53  | W         | 10              | 1,200    | 0,0472 | 0,55               | 0,64        | 0,70   | 0,79          |
| 4,0       | 0,1575 | 0,8               | 0,0315 | 716         | 295    | 43         | 50  | W,J,TW    | 8               | 1,588    | 0,0625 | 1,25               | 1,44        | 1,66   | 1,86          |
| 5,0       | 0,1575 | 1,1               | 0,0433 | 1082        | 442    | 40         | 50  | J,TW      | 8               | 2,000    | 0,0787 | 1,87               | 2,21        | 2,68   | 3,06          |
| 5,0       | 0,1969 | 1,2               | 0,0472 | 1340        | 523    | 40         | 45  | J         | 7               | 2,381    | 0,0937 | 3,85               | 4,24        | 3,65   | 4,04          |
| 5,0       | 0,1575 | -                 | -      | 1340        | 523    | 40         | 45  | J         | 7               | 2,381    | 0,0937 | -                  | -           | 4,59   | -             |
| 6,0       | 0,1969 | 1,2               | 0,0472 | 2263        | 846    | 38         | 45  | J         | 6               | 3,500    | 0,1378 | 5,94               | 6,47        | 6,89   | 7,42          |
| 6,0       | 0,1969 | 1,5               | 0,0591 | 2336        | 896    | 32         | 40  | J,TW      | 6               | 3,500    | 0,1378 | 8,12               | 9,25        | 8,65   | 9,78          |
| 7,0       | 0,2362 | -                 | -      | 3333        | 1423   | 30         | 36  | J,TW      | 7               | 3,969    | 0,1563 | 13,9               | -           | 14,5   | -             |
| 3,0       | 0,1181 | 0,6               | 0,0236 | 455         | 202    | 43         | 50  | W         | 9               | 1,200    | 0,0472 | 0,59               | 0,69        | 0,71   | 0,81          |
| 4,0       | 0,1575 | 0,8               | 0,0315 | 541         | 276    | 40         | 48  | W         | 12              | 1,200    | 0,0472 | 1,52               | 1,64        | 2,01   | 2,17          |
| 5,0       | 0,1969 | 1,1               | 0,0433 | 1173        | 513    | 40         | 50  | J         | 9               | 2,000    | 0,0787 | 2,03               | 2,40        | 2,95   | 3,35          |
| 5,0       | 0,1969 | 1,2               | 0,0472 | 1605        | 719    | 36         | 43  | J         | 9               | 2,381    | 0,0937 | 5,26               | 5,79        | 5,01   | 5,54          |
| 6,0       | 0,2362 | 1,2               | 0,0591 | 2336        | 896    | 36         | 43  | J,TW      | 6               | 3,500    | 0,1378 | 7,80               | 8,93        | 8,24   | 9,37          |
| 7,0       | 0,2756 | 1,5               | 0,0591 | 3287        | 1379   | 30         | 36  | J,TW      | 7               | 3,969    | 0,1563 | 12,7               | 14,0        | 13,1   | 14,4          |
| 9,0       | 0,3543 | -                 | -      | 4563        | 1983   | 28         | 34  | J         | 7               | 4,762    | 0,1875 | 24,2               | -           | 25,8   | -             |
| 3,5       | 0,1378 | 0,8               | 0,0315 | 543         | 274    | 40         | 48  | W         | 12              | 1,200    | 0,0472 | 0,70               | 0,81        | 0,99   | 1,14          |
| 4,0       | 0,1575 | 0,8               | 0,0315 | 817         | 386    | 38         | 45  | J         | 10              | 1,588    | 0,0625 | 1,90               | 2,13        | 2,19   | 2,42          |
| 5,0       | 0,1969 | 1,1               | 0,0433 | 1252        | 592    | 36         | 43  | J,TW      | 10              | 2,000    | 0,0787 | 3,11               | 3,53        | 4,05   | 4,51          |
| 6,0       | 0,2362 | 1,5               | 0,0591 | 2237        | 917    | 36         | 43  | J         | 7               | 3,175    | 0,1250 | 7,12               | 8,50        | 7,57   | 8,70          |
| 7,0       | 0,2756 | 1,5               | 0,0591 | 3293        | 1379   | 34         | 40  | J,TW      | 7               | 3,969    | 0,1563 | 11,8               | 13,1        | 12,9   | 14,2          |
| 8,0       | 0,3150 | -                 | -      | 3333        | 1423   | 28         | 34  | J         | 7               | 3,969    | 0,1563 | 17,1               | -           | 18,5   | -             |
| 9,0       | 0,3543 | -                 | -      | 4563        | 1983   | 28         | 34  | J         | 7               | 4,762    | 0,1875 | 28,1               | -           | 30,3   | -             |
| 4,5       | 0,1772 | 0,8               | 0,0315 | 919         | 468    | 36         | 42  | J         | 12              | 1,588    | 0,0625 | 1,35               | 1,57        | 1,98   | 2,20          |
| 5,0       | 0,1969 | 1,1               | 0,0433 | 1327        | 668    | 36         | 43  | J         | 11              | 2,000    | 0,0787 | 3,41               | 3,85        | 4,38   | 4,87          |
| 6,0       | 0,2362 | 1,5               | 0,0591 | 2467        | 1081   | 34         | 40  | J         | 8               | 3,175    | 0,1250 | 8,38               | 9,57        | 8,54   | 9,73          |
| 7,0       | 0,2756 | 1,5               | 0,0591 | 3356        | 1444   | 32         | 38  | J         | 7               | 3,969    | 0,1563 | 14,7               | 16,1        | 16,0   | 17,4          |
| 8,0       | 0,3150 | -                 | -      | 4563        | 1983   | 28         | 34  | J         | 7               | 4,762    | 0,1875 | 19,0               | -           | 21,8   | -             |
| 10,       | 0,3937 | -                 | -      | 4659        | 2080   | 24         | 30  | J         | 7               | 4,762    | 0,1875 | 36,2               | -           | 37,1   | -             |

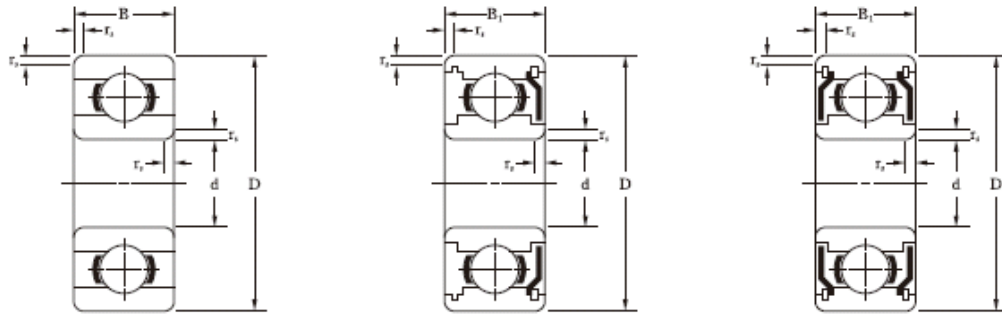
# Inch series



| Bore Diameter:<br>d |        | Outer Diameter:<br>D |        | Flange Diameter:<br>Df |        | Radius:<br>rs (min) |      | Open Bearings |       |                  |       | Seal, Shield Bearings |             |                   |               |     |          |     |
|---------------------|--------|----------------------|--------|------------------------|--------|---------------------|------|---------------|-------|------------------|-------|-----------------------|-------------|-------------------|---------------|-----|----------|-----|
|                     |        |                      |        |                        |        |                     |      | Width: B      |       | Flange Width: BF |       |                       |             | Bearing Reference |               |     |          |     |
| inch                | mm     | inch                 | mm     | inch                   | mm     | inch                | mm   | inch          | mm    | inch             | mm    | Open                  | Flange Open | Shield            | Flange Shield | 2RS | Seal 2RU | TTS |
| 0,0400              | 1,016  | 0,1250               | 3,175  | 0,1710                 | 4,343  | 0,0039              | 0,10 | 0,0469        | 1,191 | 0,0130           | 0,330 | R09                   | -           | FR09              | -             | -   | -        | -   |
| 0,0469              | 1,191  | 0,1562               | 3,967  | 0,2030                 | 5,156  | 0,0039              | 0,10 | 0,0625        | 1,588 | 0,0130           | 0,330 | R0                    | FR0         | ROZZ              | FR0ZZ         | -   | -        | -   |
| 0,0550              | 1,397  | 0,1875               | 4,762  | 0,2340                 | 5,944  | 0,0039              | 0,10 | 0,0781        | 1,984 | 0,0230           | 0,584 | R1                    | FR1         | R1ZZ              | FR1ZZ         | -   | -        | -   |
| 0,0781              | 1,984  | 0,2500               | 6,350  | 0,2960                 | 7,518  | 0,0039              | 0,10 | 0,0937        | 2,380 | 0,0230           | 0,584 | R1-4                  | FR1-4       | R1-4ZZ            | FR1-4ZZ       | -   | -        | TTS |
| 0,0937              | 2,380  | 0,1875               | 4,762  | 0,2340                 | 5,944  | 0,0039              | 0,10 | 0,0625        | 1,588 | 0,0180           | 0,457 | R133                  | FR133       | -                 | -             | -   | -        | -   |
|                     |        | 0,1875               | 4,762  | 0,2340                 | 5,944  | 0,0039              | 0,10 | -             | -     | -                | -     | -                     | -           | R133ZZS           | FR133ZZS      | -   | -        | -   |
|                     |        | 0,3125               | 7,938  | 0,3590                 | 9,119  | 0,0059              | 0,15 | 0,1094        | 2,779 | 0,0230           | 0,584 | R1-5                  | FR1-5       | R1-5ZZS           | FR1-5ZZS      | -   | -        | TTS |
| 0,1250              | 3,175  | 0,2500               | 6,350  | 0,2960                 | 7,518  | 0,0039              | 0,10 | 0,0937        | 2,380 | 0,0230           | 0,584 | R144J                 | FR144J      | R144JZZ           | FR144JZZ      | -   | -        | TTS |
|                     |        | 0,2500               | 6,350  | 0,2960                 | 7,518  | 0,0039              | 0,10 | 0,0937        | 2,380 | 0,0230           | 0,584 | R144                  | FR144       | R144ZZ            | FR144ZZ       | -   | -        | TTS |
|                     |        | 0,3125               | 7,938  | 0,3590                 | 9,119  | 0,0039              | 0,10 | 0,1094        | 2,779 | 0,0230           | 0,584 | R2-5                  | FR2-5       | R2-5ZZ            | FR2-5ZZ       | -   | -        | TTS |
|                     |        | 0,3750               | 9,525  | 0,4220                 | 10,719 | 0,0059              | 0,15 | 0,1094        | 2,779 | 0,0230           | 0,584 | R2-6                  | FR2-6       | R2-6ZZ            | FR2-6ZZ       | 2RS | 2RU      | TTS |
|                     |        | 0,3750               | 9,525  | 0,4400                 | 11,176 | 0,0118              | 0,30 | 0,1562        | 3,967 | 0,0300           | 0,762 | R2                    | FR2         | R2ZZ              | FR2ZZ         | 2RS | 2RU      | -   |
|                     |        | 0,5000               | 12,700 | -                      | -      | 0,0118              | 0,30 | 0,1719        | 4,366 | -                | -     | R2a                   | -           | R2AZZ             | -             | -   | -        | -   |
| 0,1562              | 3,967  | 0,3125               | 7,938  | 0,3590                 | 9,119  | 0,0039              | 0,10 | 0,1094        | 2,779 | 0,0230           | 0,584 | R155                  | FR155       | R155ZZS           | FR155ZZS      | -   | -        | -   |
| 0,1875              | 4,762  | 0,3125               | 7,938  | 0,3590                 | 9,119  | 0,0039              | 0,10 | 0,1094        | 2,779 | 0,0230           | 0,584 | R156                  | FR156       | R156ZZS           | FR156ZZS      | -   | -        | TTS |
|                     |        | 0,3750               | 9,525  | 0,4220                 | 10,719 | 0,0039              | 0,10 | 0,1250        | 3,175 | 0,0230           | 0,584 | R166                  | FR166       | R166ZZ            | FR166ZZ       | -   | -        | TTS |
|                     |        | 0,5000               | 12,700 | 0,5650                 | 14,351 | 0,0118              | 0,30 | 0,1960        | 4,978 | 0,0420           | 1,067 | -                     | FR3         | -                 | -             | -   | -        | -   |
|                     |        | 0,5000               | 12,700 | 0,5650                 | 14,351 | 0,0118              | 0,30 | 0,1562        | 3,967 | -                | -     | R3                    | -           | R3ZZ              | FR3ZZ         | 2RS | RRU      | TTS |
|                     |        | 0,6250               | 15,875 | -                      | -      | 0,0118              | 0,30 | 0,1960        | 4,978 | -                | -     | R3A                   | -           | R3AZZ             | -             | 2RS | RRU      | -   |
| 0,2500              | 6,350  | 0,3750               | 9,525  | 0,4220                 | 10,719 | 0,0039              | 0,10 | 0,1250        | 3,175 | 0,0230           | 0,584 | R168                  | FR168       | R168ZZS           | FR168ZZS      | -   | -        | TTS |
|                     |        | 0,5000               | 12,700 | 0,5470                 | 13,894 | 0,0059              | 0,15 | 0,1250        | 3,175 | 0,0230           | 0,584 | R188                  | FR188       | R188ZZ            | FR188ZZ       | 2RS | RRU      | TTS |
|                     |        | 0,6250               | 15,875 | 0,6900                 | 17,526 | 0,0118              | 0,30 | 0,1960        | 4,978 | 0,0420           | 1,067 | R4                    | FR4         | R4ZZ              | FR4ZZ         | 2RS | RRU      | TTS |
|                     |        | 0,7500               | 19,050 | -                      | -      | 0,0157              | 0,40 | 0,2188        | 5,558 | -                | -     | R4A                   | -           | R4AZZ             | -             | 2RS | RRU      | -   |
| 0,3125              | 7,938  | 0,5000               | 12,700 | 0,5470                 | 13,894 | 0,0059              | 0,15 | 0,1562        | 3,967 | 0,0310           | 0,787 | R1810                 | FR1810      | R1810ZZS          | FR1810ZZS     | -   | -        | TTS |
| 0,3750              | 9,525  | 0,8750               | 22,225 | 0,9690                 | 24,613 | 0,0157              | 0,40 | 0,2188        | 5,558 | 0,0620           | 1,575 | R6                    | FR6         | R6ZZ              | FR6ZZ         | 2RS | 2RU      | TTS |
| 0,5000              | 12,700 | 1,1250               | 28,575 | 1,2252                 | 31,120 | 0,0157              | 0,40 | 0,2500        | 6,350 | 0,0620           | 1,575 | R8                    | FR8         | R8ZZ              | FR8ZZ         | 2RS | 2RU      | TTS |
| 0,6250              | 15,875 | 1,3750               | 34,925 | 1,4900                 | 37,846 | 0,0315              | 0,80 | 0,2812        | 7,142 | -                | -     | R10                   | -           | R10ZZ             | FR10ZZ        | 2RS | 2RU      | -   |
| 0,7500              | 19,050 | 1,6250               | 41,275 | -                      | -      | 0,0315              | 0,80 | 0,3125        | 7,938 | -                | -     | R12                   | -           | R12ZZ             | -             | 2RS | SRU      | -   |

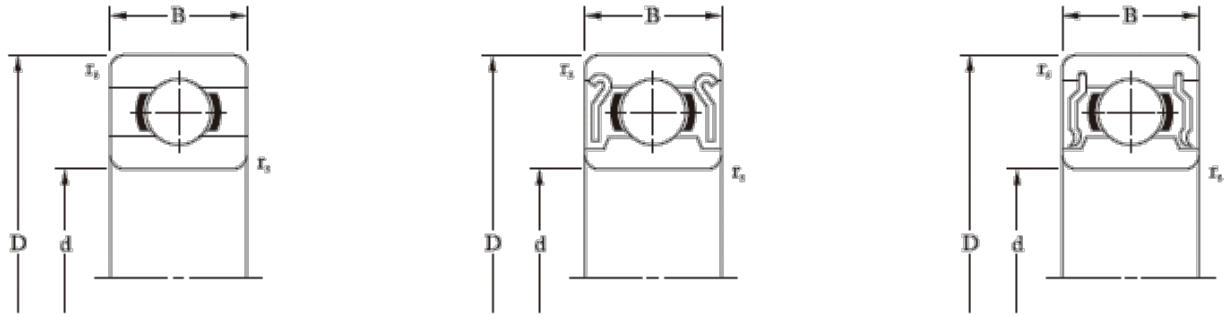


# Inch series



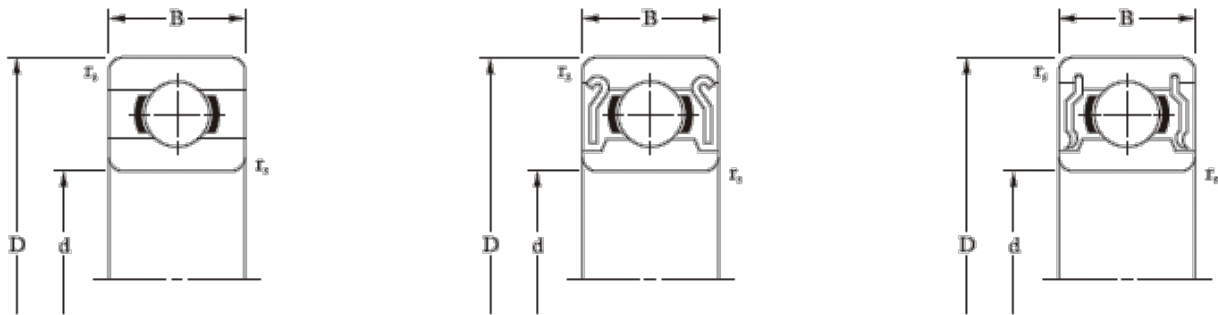
| Width: B1 |        | Flange Width: Bf1 |       | Load Rating |        | Max. Speed |     | Cage Type | Ball Complement |          |       | Weight (Reference) |             |        |               |
|-----------|--------|-------------------|-------|-------------|--------|------------|-----|-----------|-----------------|----------|-------|--------------------|-------------|--------|---------------|
| Inch      | mm     | Inch              | mm    | Cr(N)       | Cor(N) | Grease     | Oil |           | Qty             | Size: Dw |       | Open               | Flange Open | Shield | Flange Shield |
|           |        |                   |       |             |        | X1000rpm   |     |           |                 | Inch     | mm    |                    |             |        |               |
| -         | -      | -                 | -     | 106         | 28     | 130        | 150 | W         | 6               | 0,0250   | 0,635 | 0,05               | 0,07        | -      | -             |
| 0,0937    | 2,380  | 0,0310            | 0,787 | 112         | 33     | 110        | 130 | W         | 7               | 0,0236   | 0,600 | 0,10               | 0,12        | 0,15   | 0,20          |
| 0,1094    | 2,779  | 0,0310            | 0,787 | 232         | 67     | 90         | 110 | W         | 6               | 0,0394   | 1,000 | 0,15               | 0,19        | 0,19   | 0,25          |
| 0,1406    | 3,571  | 0,0310            | 0,787 | 284         | 96     | 67         | 80  | W         | 7               | 0,0394   | 1,000 | 0,40               | 0,46        | 0,53   | 0,61          |
| -         | -      | -                 | -     | 189         | 60     | 80         | 95  | W         | 7               | 0,0315   | 0,800 | 0,10               | 0,13        | -      | -             |
| 0,0937    | 2,380  | 0,0310            | 0,787 | 144         | 53     | 80         | 95  | W         | 10              | 0,0236   | 0,600 | -                  | -           | 0,15   | 0,21          |
| 0,1406    | 3,571  | 0,0310            | 0,787 | 552         | 176    | 60         | 71  | W         | 6               | 0,0625   | 1,588 | 0,60               | 0,67        | 1,15   | 1,25          |
| 0,1094    | 2,779  | 0,0310            | 0,787 | 311         | 110    | 67         | 80  | J         | 8               | 0,0394   | 1,000 | 0,27               | 0,33        | 0,32   | 0,40          |
| 0,1094    | 2,779  | 0,0310            | 0,787 | 284         | 96     | 67         | 80  | W         | 7               | 0,0394   | 1,000 | 0,27               | 0,33        | 0,40   | 0,48          |
| 0,1406    | 3,571  | 0,0310            | 0,787 | 558         | 180    | 60         | 67  | W,J       | 6               | 0,0625   | 1,588 | 0,50               | 0,57        | 0,74   | 0,84          |
| 0,1406    | 3,571  | 0,0310            | 0,787 | 640         | 227    | 53         | 63  | J         | 7               | 0,0625   | 1,588 | 0,96               | 1,05        | 1,23   | 1,35          |
| 0,1562    | 3,967  | 0,0300            | 0,762 | 631         | 219    | 56         | 67  | J         | 7               | 0,0625   | 1,588 | 1,04               | 1,20        | 1,37   | 1,53          |
| 0,1719    | 4,366  | -                 | -     | 640         | 227    | 53         | 63  | J         | 7               | 0,0625   | 1,588 | 3,30               | -           | 3,30   | -             |
| 0,1250    | 3,175  | 0,0360            | 0,914 | 359         | 150    | 53         | 63  | W         | 10              | 0,0394   | 1,588 | 0,51               | 0,58        | 0,61   | 0,72          |
| 0,1250    | 3,175  | 0,0360            | 0,914 | 359         | 150    | 53         | 63  | W         | 10              | 0,0394   | 1,000 | 0,40               | 0,47        | 0,45   | 0,56          |
| 0,1250    | 3,175  | 0,0310            | 0,787 | 709         | 272    | 50         | 60  | J         | 8               | 0,0625   | 1,588 | 0,81               | 0,90        | 0,85   | 0,97          |
| -         | -      | -                 | -     | 1301        | 488    | 43         | 53  | J         | 7               | 0,0937   | 2,381 | -                  | 2,50        | -      | -             |
| 0,1960    | 4,978  | 0,0420            | 1,067 | 1301        | 488    | 43         | 53  | J         | 7               | 0,0937   | 2,381 | 2,21               | -           | 2,95   | 3,24          |
| 0,1960    | 4,978  | -                 | -     | 1480        | 621    | 38         | 45  | J         | 8               | 0,0937   | 2,381 | 4,75               | -           | 5,08   | -             |
| 0,1250    | 3,175  | 0,0360            | 0,914 | 373         | 172    | 48         | 56  | W         | 11              | 0,0394   | 1,000 | 0,57               | 0,66        | 0,60   | 0,73          |
| 0,1875    | 4,762  | 0,0450            | 1,143 | 1082        | 442    | 40         | 50  | J         | 8               | 0,0787   | 2,000 | 1,60               | 1,71        | 2,32   | 2,54          |
| 0,1960    | 4,978  | 0,0420            | 1,067 | 1480        | 621    | 38         | 45  | J         | 8               | 0,0937   | 2,381 | 4,46               | 4,82        | 4,54   | 4,90          |
| 0,2812    | 7,142  | -                 | -     | 2336        | 896    | 36         | 43  | J         | 6               | 0,1378   | 3,500 | 7,48               | -           | 10,0   | -             |
| 0,1562    | 3,967  | 0,0310            | 0,787 | 542         | 276    | 40         | 48  | W         | 12              | 0,0472   | 1,200 | 1,39               | 1,54        | 1,57   | 1,72          |
| 0,2812    | 7,142  | 0,0620            | 1,575 | 3332        | 1411   | 32         | 38  | J         | 7               | 0,1563   | 3,969 | 9,02               | 9,71        | 11,7   | 12,4          |
| 0,3125    | 7,938  | 0,0620            | 1,575 | 5108        | 2413   | 27         | 32  | J         | 8               | 0,1875   | 4,762 | 11,6               | 13,0        | 24,1   | 25,6          |
| 0,3438    | 8,733  | 0,0687            | 1,745 | 5999        | 3265   | 21         | 25  | RJ        | 10              | 0,1875   | 4,762 | 23,5               | -           | 38,1   | 40,40         |
| 0,4375    | 11,113 | -                 | -     | 9384        | 5057   | 17         | 21  | RJ,TW     | 9               | 0,2500   | 6,350 | 53,1               | -           | 69,3   | -             |

# Extra thin metric series: 6700,6800,6900



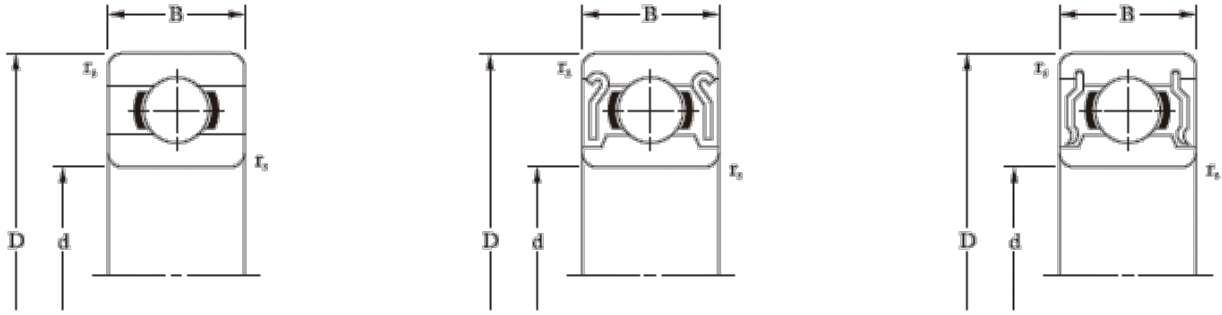
| Bore Diameter:<br>d |        | Outer Diameter:<br>D |        | Flange Diameter:<br>Df |        | Radius:<br>rs (min) |        | Width: B |        | Flange<br>Width: BF |        | Bearing Reference |                |         |                  |
|---------------------|--------|----------------------|--------|------------------------|--------|---------------------|--------|----------|--------|---------------------|--------|-------------------|----------------|---------|------------------|
| Mm                  | Inch   | Mm                   | Inch   | Mm                     | Inch   | Mm                  | Inch   | Mm       | Inch   | Mm                  | inch   | Open              | Flange<br>Open | Shield  | Flange<br>Shield |
| 10                  | 0,3937 | 15                   | 0,5906 | 16,5                   | 0,6496 | 0,15                | 0,0059 | 3        | 0,1181 | 0,8                 | 0,0315 | 6700              | F6700          | -       | -                |
|                     |        | 15                   | 0,5906 | 16,5                   | 0,6496 | 0,15                | 0,0059 | 4        | 0,1575 | 0,8                 | 0,0315 | -                 | -              | 6700ZS  | F6700ZS          |
|                     |        | 19                   | 0,7480 | 21,0                   | 0,8268 | 0,30                | 0,0118 | 5        | 0,1969 | 1,0                 | 0,0394 | 6800              | F6800          | 6800ZZ  | F6800ZZ          |
|                     |        | 19                   | 0,7480 | 21,0                   | 0,8268 | 0,30                | 0,0118 | 7        | 0,2756 | 1,5                 | 0,0591 | 63800             | F63800         | 63800ZZ | F63800ZZ         |
| 12                  | 0,4724 | 18                   | 0,7087 | 19,5                   | 0,7677 | 0,20                | 0,0079 | 4        | 0,1575 | 0,8                 | 0,0315 | 6701              | F6701          | 6701ZS  | F6701ZS          |
|                     |        | 21                   | 0,8268 | 23,0                   | 0,9055 | 0,30                | 0,0118 | 5        | 0,1969 | 1,1                 | 0,0433 | 6801              | F6801          | 6801ZZ  | F6801ZZ          |
|                     |        | 21                   | 0,8268 | 23,0                   | 0,9055 | 0,30                | 0,0118 | 7        | 0,2756 | 1,5                 | 0,0591 | 63801             | F63801         | 63801ZZ | F63801ZZ         |
|                     |        | 24                   | 0,9449 | 26,5                   | 1,0433 | 0,30                | 0,0118 | 6        | 0,2362 | 1,5                 | 0,0591 | 6901              | F6901          | 6901ZZ  | F6901ZZ          |
| 15                  | 0,5906 | 21                   | 0,8268 | 22,5                   | 0,8858 | 0,20                | 0,0079 | 4        | 0,1575 | 0,8                 | 0,0315 | 6702              | F6702          | 6702ZS  | F6702ZS          |
|                     |        | 24                   | 0,9449 | 26,0                   | 1,0236 | 0,30                | 0,0118 | 5        | 0,1969 | 1,1                 | 0,0433 | 6802              | F6802          | 6802ZZ  | F6802ZZ          |
|                     |        | 24                   | 0,9449 | 26,0                   | 1,0236 | 0,30                | 0,0118 | 7        | 0,2756 | 1,5                 | 0,0591 | 63802             | F63802         | 63802ZZ | F63802ZZ         |
|                     |        | 28                   | 1,1024 | 30,5                   | 1,2008 | 0,30                | 0,0118 | 7        | 0,2756 | 1,5                 | 0,0591 | 6902              | F6902          | 6902ZZ  | F6902ZZ          |
| 17                  | 0,6693 | 23                   | 0,9055 | 24,5                   | 0,9646 | 0,20                | 0,0079 | 4        | 0,1575 | 0,8                 | 0,0315 | 6703              | F6703          | 6703ZS  | F6703ZS          |
|                     |        | 26                   | 1,0236 | 28,0                   | 1,1024 | 0,30                | 0,0118 | 5        | 0,1969 | 1,1                 | 0,0433 | 6803              | F6803          | 6803ZZ  | F6803ZZ          |
|                     |        | 26                   | 1,0236 | 28,0                   | 1,1024 | 0,30                | 0,0118 | 7        | 0,2756 | 1,5                 | 0,0591 | 63803             | F63803         | 63803ZZ | F63803ZZ         |
|                     |        | 30                   | 1,1811 | 32,5                   | 1,2795 | 0,30                | 0,0118 | 7        | 0,2756 | 1,5                 | 0,0591 | 6903              | F6903          | 6903ZZ  | F6903ZZ          |
| 20                  | 0,7874 | 27                   | 1,0630 | 28,5                   | 1,1220 | 0,20                | 0,0079 | 4        | 0,1575 | 0,8                 | 0,0315 | 6704              | F6704          | 6704ZS  | F6704ZS          |
|                     |        | 32                   | 1,2598 | 35,0                   | 1,3780 | 0,30                | 0,0118 | 7        | 0,2756 | 1,1                 | 0,0591 | 6804              | F6804          | 6804ZZ  | F6804ZZ          |
|                     |        | 32                   | 1,2598 | 35,0                   | 1,3780 | 0,30                | 0,0118 | 10       | 0,3937 | 1,5                 | 0,0787 | 63804             | F63804         | 63804ZZ | F63804ZZ         |
|                     |        | 37                   | 1,4567 | 40,0                   | 1,5748 | 0,30                | 0,0118 | 9        | 0,3543 | 1,5                 | 0,0787 | 6904              | F6904          | 6904ZZ  | F6904ZZ          |
| 25                  | 0,9843 | 32                   | 1,2598 | 34,0                   | 1,3386 | 0,20                | 0,0079 | 4        | 0,1575 | 0,8                 | 0,0394 | 6705              | F6705          | -       | -                |
|                     |        | 37                   | 1,4567 | 40,0                   | 1,5748 | 0,30                | 0,0118 | 7        | 0,2756 | 1,5                 | 0,0591 | 6805              | F6805          | 6805ZZ  | F6805ZZ          |
|                     |        | 37                   | 1,4567 | 40,0                   | 1,5748 | 0,30                | 0,0118 | 10       | 0,3937 | 2,0                 | 0,0787 | 63805             | F63805         | 63805ZZ | F63805ZZ         |
|                     |        | 42                   | 1,6535 | 45,0                   | 1,7717 | 0,30                | 0,0118 | 9        | 0,3543 | 2,0                 | 0,0787 | 6905              | F6905          | 6905ZZ  | F6905ZZ          |
| 30                  | 1,1811 | 37                   | 1,4567 | 39,0                   | 1,5354 | 0,20                | 0,0079 | 4        | 0,1575 | 1,0                 | 0,0394 | 6706              | F6706          | -       | -                |
|                     |        | 42                   | 1,6535 | 45,0                   | 1,7717 | 0,30                | 0,0118 | 7        | 0,2756 | 1,5                 | 0,0591 | 6806              | F6806          | 6806ZZ  | F6806ZZ          |
|                     |        | 42                   | 1,6535 | 45,0                   | 1,7717 | 0,30                | 0,0118 | 10       | 0,3937 | 2,0                 | 0,0787 | 63806             | F63806         | 63806ZZ | F63806ZZ         |
|                     |        | 47                   | 1,8504 | 50,0                   | 1,9685 | 0,30                | 0,0118 | 9        | 0,3543 | 2,0                 | 0,0787 | 6906              | F6906          | 6906ZZ  | F6906ZZ          |

# Extra thin metric series: 6700,6800,6900



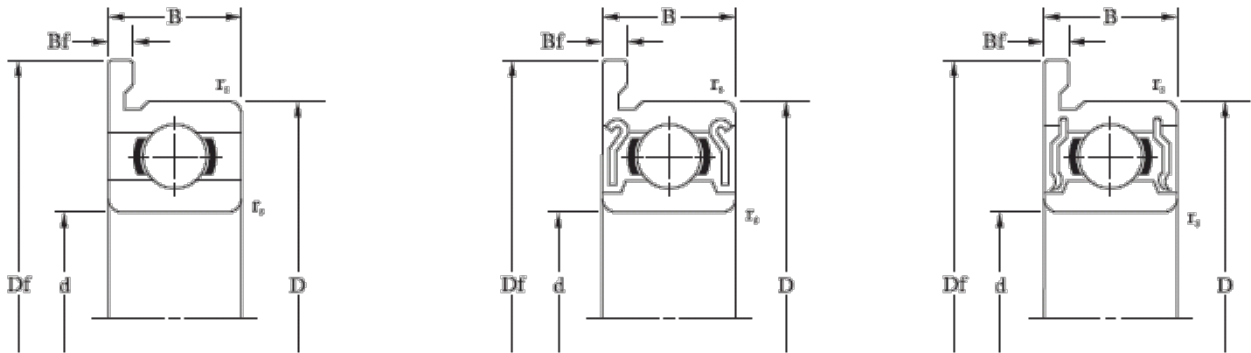
| Seal |     |     | Load Rating |        | Max. Speed |     | Cage Type | Ball Complement |          |        | Weight (Reference) |               |
|------|-----|-----|-------------|--------|------------|-----|-----------|-----------------|----------|--------|--------------------|---------------|
|      |     |     |             |        | Grease     | Oil |           | Qty             | Size: Dw |        |                    |               |
|      |     |     | Cr(N)       | Cor(N) | X1000rpm   |     |           | psc             | mm       | Inch   | Shield             | Flange Shield |
| -    | -   | -   | 855         | 435    | 15         | 17  | W         | 11              | 1,588    | 0,0625 | 1,4                | 1,6           |
| 2RS  | -   | TTS | 855         | 435    | 15         | 17  | W         | 11              | 1,588    | 0,0625 | 1,9                | 2,1           |
| 2RS  | 2RU | -   | 1716        | 840    | 37         | 43  | J,TW      | 10              | 2,381    | 0,0937 | 5,6                | 6,1           |
| 2RS  | 2RU | -   | 1716        | 840    | 37         | 43  | J,TW      | 10              | 2,381    | 0,0937 | 7,4                | 8,1           |
| 2RS  | 2RU | -   | 2695        | 1273   | 34         | 41  | J         | 9               | 3,175    | 0,1250 | 10,0               | 11,3          |
| 2RS  | -   | TTS | 926         | 530    | 13         | 15  | W         | 13              | 1,588    | 0,0625 | 3,1                | 3,4           |
| 2RS  | 2RU | -   | 1915        | 1041   | 33         | 39  | J,TW      | 12              | 2,381    | 0,0937 | 6,5                | 7,1           |
| 2RS  | 2RU | -   | 1915        | 1041   | 33         | 39  | J,TW      | 12              | 2,381    | 0,0937 | 8,5                | 9,3           |
| 2RS  | 2RU | -   | 2886        | 1466   | 31         | 36  | J         | 10              | 3,175    | 0,1250 | 12,0               | 13,2          |
| 2RS  | -   | TTS | 937         | 582    | 11         | 13  | W         | 14              | 1,588    | 0,0625 | 3,6                | 3,9           |
| 2RS  | 2RU | -   | 2073        | 1253   | 28         | 33  | J,TW      | 14              | 2,381    | 0,0937 | 7,6                | 8,3           |
| 2RS  | 2RU | -   | 2073        | 1253   | 28         | 33  | J,TW      | 14              | 2,381    | 0,0937 | 10,0               | 10,9          |
| 2RS  | 2RU | -   | 4321        | 2259   | 26         | 30  | J         | 10              | 3,969    | 0,1563 | 19,0               | 19,9          |
| 2RS  | -   | TTS | 1000        | 658    | 9,5        | 11  | W         | 16              | 1,588    | 0,0625 | 4,0                | 4,4           |
| 2RS  | 2RU | -   | 2233        | 1456   | 26         | 30  | J,TW      | 16              | 2,381    | 0,0937 | 8,2                | 8,9           |
| 2RS  | 2RU | -   | 2233        | 1456   | 26         | 30  | J,TW      | 16              | 2,381    | 0,0937 | 11,0               | 12,0          |
| 2RS  | 2RU | -   | 4588        | 2565   | 23         | 38  | J         | 11              | 3,969    | 0,1563 | 20,0               | 21,4          |
| 2RS  | -   | TTS | 1402        | 729    | 8,5        | 10  | W         | 18              | 1,588    | 0,0625 | 5,9                | 6,3           |
| 2RS  | 2RU | -   | 4015        | 2462   | 21         | 25  | J,RJ      | 13              | 3,500    | 0,1378 | 18,0               | 19,8          |
| 2RS  | 2RU | -   | 4015        | 2462   | 21         | 25  | J,RJ      | 13              | 3,500    | 0,1378 | 24,0               | 26,5          |
| 2RS  | 2RU | -   | 6381        | 3682   | 19         | 23  | RJ        | 11              | 4,762    | 0,1875 | 40,0               | 42,8          |
| 2RS  | -   | TTS | 1091        | 838    | 7          | 8   | W         | 21              | 1,588    | 0,0625 | 7,1                | 7,9           |
| 2RS  | 2RU | -   | 4303        | 2932   | 18         | 21  | J,RJ      | 15              | 3,500    | 0,1378 | 24,0               | 26,1          |
| 2RS  | 2RU | -   | 4303        | 2932   | 18         | 21  | J,RJ      | 15              | 3,500    | 0,1378 | 32,0               | 34,1          |
| 2RS  | 2RU | -   | 7001        | 4540   | 16         | 19  | RJ        | 13              | 4,762    | 0,1875 | 47,0               | 50,2          |
| -    | 2RU | -   | 1143        | 947    | 5,5        | 7   | W         | 24              | 1,588    | 0,0625 | 8,3                | 9,2           |
| 2RS  | 2RU | -   | 4538        | 3402   | 15         | 18  | J,RJ      | 17              | 3,500    | 0,1378 | 27,0               | 29,4          |
| 2RS  | 2RU | -   | 4538        | 3402   | 15         | 18  | J,RJ      | 17              | 3,500    | 0,1378 | 36,0               | 39,2          |
| 2RS  | 2RU | -   | 7242        | 5003   | 14         | 17  | RJ        | 14              | 4,762    | 0,1875 | 53,0               | 56,6          |

# Extra thin metric series: 6700,6800,6900



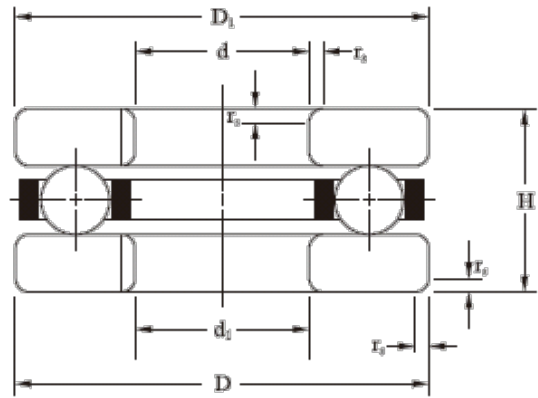
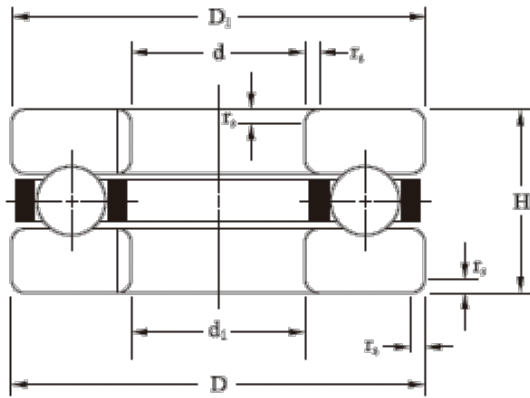
| Bore Diameter:<br>d |        | Outer Diameter:<br>D |        | Flange Diameter:<br>Df |        | Radius:<br>rs (min) |        | Width: B |        | Flange<br>Width: BF |        | Bearing Reference |                |        |                  |
|---------------------|--------|----------------------|--------|------------------------|--------|---------------------|--------|----------|--------|---------------------|--------|-------------------|----------------|--------|------------------|
| mm                  | Inch   | mm                   | Inch   | mm                     | Inch   | mm                  | Inch   | mm       | Inch   | mm                  | inch   | Open              | Flange<br>Open | Shield | Flange<br>Shield |
| 35                  | 1,3780 | 44                   | 1,7323 | -                      | -      | 0,30                | 0,0118 | 5        | 0,1969 | -                   | -      | 6707              | -              | -      | -                |
|                     |        | 47                   | 1,8504 | 50,0                   | 1,9685 | 0,30                | 0,0118 | 7        | 0,2756 | 1,5                 | 0,0591 | 6807              | F6807          | 6807ZZ | F6807ZZ          |
|                     |        | 55                   | 2,1654 | 58,0                   | 2,2835 | 0,60                | 0,0236 | 10       | 0,3937 | 2,5                 | 0,0984 | 6707              | F6907          | 6907ZZ | F6907ZZ          |
| 50                  | 1,9685 | 50                   | 1,9685 | -                      | -      | 0,30                | 0,0118 | 6        | 0,2362 | -                   | -      | 6708              | -              | -      | -                |
|                     |        | 52                   | 2,0472 | 55,0                   | 2,1654 | 0,30                | 0,0118 | 7        | 0,2756 | 1,5                 | 0,0591 | 6808              | F6808          | 6808ZZ | F6808ZZ          |
|                     |        | 62                   | 2,4409 | 65,0                   | 2,5591 | 0,60                | 0,0236 | 12       | 0,4724 | 2,5                 | 0,0984 | 6908              | F6908          | 6908ZZ | F6908ZZ          |
| 55                  | 2,1654 | 55                   | 2,1654 | -                      | -      | 0,3                 | 0,0118 | 6        | 0,2362 | -                   | -      | 6709              | -              | -      | -                |
|                     |        | 58                   | 2,2835 | 61                     | 2,4016 | 0,3                 | 0,0118 | 7        | 0,2756 | 1,5                 | 0,0591 | 6809              | F6808          | 6809ZZ | F6809ZZ          |
|                     |        | 68                   | 2,6772 | 71                     | 2,7953 | 0,6                 | 0,0236 | 12       | 0,4724 | 2,5                 | 0,0984 | 6909              | F6908          | 6909ZZ | F6909ZZ          |
| 50                  | 1,9685 | 62                   | 2,4409 | -                      | -      | 0,3                 | 0,0118 | 6        | 0,2362 | -                   | -      | 6710              | -              | -      | -                |
|                     |        | 65                   | 2,5591 | 68                     | 2,6772 | 0,3                 | 0,0118 | 7        | 0,2756 | 1,5                 | 0,0591 | 6810              | F6810          | 6810ZZ | F6810ZZ          |
|                     |        | 72                   | 2,8346 | 75                     | 2,9528 | 0,6                 | 0,0236 | 12       | 0,4724 | 2,5                 | 0,0984 | 6910              | F6910          | 6910ZZ | F6910ZZ          |
| 55                  | 2,1654 | 72                   | 2,8346 | -                      | -      | 0,3                 | 0,0118 | 9        | 0,3543 | -                   | -      | 6811              | -              | 6811ZZ | -                |
|                     |        | 80                   | 3,1496 | -                      | -      | 1,0                 | 0,0394 | 13       | 0,5118 | -                   | -      | 6911              | -              | 6911ZZ | -                |
| 60                  | 2,3622 | 78                   | 3,0709 | -                      | -      | 0,3                 | 0,0118 | 10       | 0,3937 | -                   | -      | 6812              | -              | 6812ZZ | -                |
|                     |        | 85                   | 3,3465 | -                      | -      | 1,0                 | 0,0394 | 13       | 0,5118 | -                   | -      | 6912              | -              | 6912ZZ | -                |
| 65                  | 2,5591 | 85                   | 3,3465 | -                      | -      | 0,6                 | 0,0236 | 10       | 0,3937 | -                   | -      | 6813              | -              | 6813ZZ | -                |
|                     |        | 90                   | 3,5433 | -                      | -      | 1,0                 | 0,0394 | 13       | 0,5118 | -                   | -      | 6913              | -              | 6913ZZ | -                |
| 70                  | 2,7559 | 90                   | 3,5433 | -                      | -      | 0,6                 | 0,0236 | 10       | 0,3937 | -                   | -      | 6814              | -              | 6814ZZ | -                |
|                     |        | 100                  | 3,9370 | -                      | -      | 1,0                 | 0,0394 | 16       | 0,6299 | -                   | -      | 6914              | -              | 6914ZZ | -                |
| 75                  | 2,9528 | 95                   | 3,7402 | -                      | -      | 0,6                 | 0,0236 | 10       | 0,3937 | -                   | -      | 6815              | -              | 6815ZZ | -                |
|                     |        | 105                  | 4,1339 | -                      | -      | 1,0                 | 0,0394 | 16       | 0,6299 | -                   | -      | 6915              | -              | 6915ZZ | -                |
| 80                  | 3,1496 | 100                  | 3,9370 | -                      | -      | 0,6                 | 0,0236 | 10       | 0,3937 | -                   | -      | 6816              | -              | 6816ZZ | -                |
|                     |        | 110                  | 4,3307 | -                      | -      | 1,0                 | 0,0394 | 16       | 0,6299 | -                   | -      | 6916              | -              | 6916ZZ | -                |
| 85                  | 3,3465 | 110                  | 4,3307 | -                      | -      | 1,0                 | 0,0394 | 13       | 0,5118 | -                   | -      | 6817              | -              | 6817ZZ | -                |
|                     |        | 120                  | 4,7244 | -                      | -      | 1,1                 | 0,0433 | 18       | 0,7087 | -                   | -      | 6917              | -              | 6917ZZ | -                |
| 90                  | 3,5433 | 115                  | 4,5276 | -                      | -      | 1,0                 | 0,0394 | 13       | 0,5185 | -                   | -      | 6818              | -              | 6818ZZ | -                |
|                     |        | 125                  | 4,9213 | -                      | -      | 1,1                 | 0,0433 | 18       | 0,7087 | -                   | -      | 6918              | -              | 6918ZZ | -                |

# Extra thin metric series: 6700,6800,6900



| Seal |     |     | Load Rating |        | Max. Speed |      | Cage Type | Ball Complement |          |        | Weight (Reference) |               |
|------|-----|-----|-------------|--------|------------|------|-----------|-----------------|----------|--------|--------------------|---------------|
|      |     |     |             |        | Grease     | Oil  |           | Qty             | Size: Dw |        |                    |               |
| 2RS  | 2RU | TTS | Cr(N)       | Cor(N) | X1000rpm   |      |           | psc             | mm       | Inch   | Shield             | Flange Shield |
| 2RS  | -   | -   | 1866        | 1635   | 4,9        | 6    | W         | 26              | 2,000    | 0,0787 | 15,0               | -             |
| 2RS  | 2RU | -   | 4729        | 3821   | 13         | 16   | J,RJ      | 19              | 3,500    | 0,1378 | 32,0               | 34,7          |
| 2RS  | 2RU | -   | 10900       | 7818   | 12         | 14   | RJ        | 14              | 5,953    | 0,2344 | 87,0               | 92,2          |
| 2RS  | -   | -   | 2516        | 2233   | 4,3        | 5    | W         | 25              | 2,381    | 0,0937 | 23,0               | -             |
| 2RS  | 2RU | -   | 4923        | 4178   | 12         | 14   | J,RJ      | 21              | 3,500    | 0,1378 | 35,0               | 38,0          |
| 2RS  | 2RU | -   | 13678       | 9968   | 11         | 13   | RJ        | 14              | 6,747    | 0,2656 | 131                | 137           |
| 2RS  | -   | -   | 2580        | 2397   | 3,9        | 4,6  | W         | 27              | 2,381    | 0,0937 | 25,0               | -             |
| 2RS  | 2RU | -   | 6187        | 5381   | 11,0       | 13,0 | J         | 21              | 3,969    | 0,1563 | 42,0               | 45,3          |
| 2RS  | 2RU | -   | 14100       | 10830  | 9,7        | 11,0 | RJ        | 15              | 6,747    | 0,2656 | 147                | 153           |
| 2RS  | -   | -   | 2670        | 2640   | 3,5        | 4,1  | W         | 30              | 2,381    | 0,0937 | 64,0               | -             |
| 2RS  | 2RU | -   | 6610        | 6090   | 9,6        | 11,0 | J,RJ      | 24              | 3,969    | 0,1563 | 52,0               | -             |
| 2RS  | 2RU | -   | 14540       | 11710  | 9,0        | 11,0 | RJ        | 16              | 6,747    | 0,2656 | 133                | -             |
| 2RS  | 2RU | -   | 8800        | 8100   | 8,7        | 10,0 | RJ        | 22              | 4,762    | 0,1875 | 83,0               | -             |
| 2RS  | -   | -   | 16600       | 14100  | 8,1        | 9,6  | RJ        | 17              | 7,144    | 0,2813 | 185                | -             |
| 2RS  | -   | -   | 11500       | 10600  | 8,0        | 9,4  | RJ        | 21              | 5,556    | 0,2187 | 104                | -             |
| 2RS  | -   | -   | 20200       | 17300  | 7,5        | 8,9  | RJ        | 17              | 7,938    | 0,3125 | 192                | -             |
| 2RS  | -   | -   | 11900       | 11500  | 7,3        | 8,6  | RJ        | 23              | 5,556    | 0,2187 | 126                | -             |
| 2RS  | -   | -   | 17400       | 16100  | 7,1        | 8,4  | RJ        | 19              | 7,144    | 0,2813 | 211                | -             |
| 2RS  | -   | -   | 12100       | 11900  | 6,8        | 8,1  | RJ        | 24              | 5,556    | 0,2187 | 134                | -             |
| 2RS  | -   | -   | 23700       | 21200  | 6,4        | 7,6  | RJ        | 17              | 8,731    | 0,3437 | 342                | -             |
| 2RS  | -   | -   | 12500       | 12900  | 12,5       | 12,9 | RJ        | 26              | 5,556    | 0,2187 | 142                | -             |
| 2RS  | -   | -   | 24400       | 22600  | 6,1        | 7,2  | RJ        | 18              | 8,731    | 0,3437 | 363                | -             |
| 2RS  | 2RU | -   | 12700       | 13300  | 12,7       | 13,3 | RJ        | 27              | 5,556    | 0,2187 | 150                | -             |
| 2RS  | -   | -   | 2500        | 24000  | 5,7        | 6,8  | RJ        | 19              | 8,731    | 0,3437 | 382                | -             |
| 2RS  | -   | -   | 18700       | 19000  | 5,6        | 6,6  | RJ        | 23              | 7,144    | 0,2813 | 266                | -             |
| 2RS  | -   | -   | 31900       | 29600  | 5,3        | 6,3  | RJ        | 17              | 10,319   | 0,4063 | 535                | -             |
| 2RS  | -   | -   | 19000       | 19700  | 5,3        | 6,3  | RJ        | 24              | 7,144    | 0,2813 | 279                | -             |
| 2RS  | -   | -   | 32800       | 31600  | 5,1        | 6,0  | RJ        | 18              | 10,319   | 0,4063 | 565                | -             |

# Thrust series: FM, F



| Bearing Reference<br>e | Inner Ring Bore Dia. |        | Outer Ring Outer Dia. |        | Outer Ring Bore Dia. |        | Inner Ring Outer Dia. |        | Radius  |        | Height |        | Load Rating |        | Cage Type | Ball Complement |          |        | Weight |
|------------------------|----------------------|--------|-----------------------|--------|----------------------|--------|-----------------------|--------|---------|--------|--------|--------|-------------|--------|-----------|-----------------|----------|--------|--------|
|                        | d                    |        | D                     |        | d1                   |        | D1                    |        | rs(min) |        | H      |        | Ca(N)       | Coa(N) |           | Qty: Z          | Size: DW |        |        |
|                        | mm                   | inch   | mm                    | Inch   | mm                   | inch   | mm                    | Inch   | mm      | inch   | mm     | inch   |             |        |           |                 | mm       | inch   |        |
| F3-8M                  | 3                    | 0,1181 | 8                     | 0,3150 | 3,2                  | 0,1260 | 7,8                   | 0,3071 | 0,15    | 0,0059 | 3,5    | 0,1378 | 933         | 590    | TP        | 6               | 1,588    | 0,0625 | 0,9    |
| F4-9M                  | 4                    | 0,1575 | 9                     | 0,3543 | 4,2                  | 0,1654 | 8,8                   | 0,3465 | 0,15    | 0,0059 | 4,0    | 0,1575 | 944         | 640    | TP        | 6               | 1,588    | 0,0625 | 1,2    |
| F4-10M                 | 4                    | 0,1575 | 10                    | 0,3937 | 4,2                  | 0,1654 | 9,8                   | 0,3858 | 0,15    | 0,0059 | 4,0    | 0,1575 | 925         | 661    | TP        | 6               | 1,588    | 0,0625 | 1,5    |
| F5-12M                 | 5                    | 0,1969 | 12                    | 0,4724 | 5,2                  | 0,2047 | 11,8                  | 0,4646 | 0,20    | 0,0079 | 4,0    | 0,1575 | 1056        | 942    | TP        | 8               | 1,588    | 0,0625 | 2,1    |
| F6-12M                 | 6                    | 0,2362 | 12                    | 0,4724 | 6,2                  | 0,2441 | 11,8                  | 0,4646 | 0,20    | 0,0079 | 4,5    | 0,1772 | 1819        | 1588   | TP        | 9               | 2,000    | 0,0787 | 2,2    |
| F6-14M                 | 6                    | 0,2362 | 14                    | 0,5512 | 6,25                 | 0,2461 | 13,8                  | 0,5433 | 0,20    | 0,0079 | 5,0    | 0,1969 | 2155        | 1701   | TP        | 7               | 2,381    | 0,0937 | 3,5    |
| F7-13M                 | 7                    | 0,2756 | 13                    | 0,5118 | 7,2                  | 0,2835 | 12,8                  | 0,6614 | 0,20    | 0,0079 | 4,5    | 0,1772 | 1767        | 1645   | TP        | 9               | 2,000    | 0,0787 | 2,6    |
| F7-17M                 | 7                    | 0,2756 | 17                    | 0,6693 | 7,2                  | 0,2835 | 16,8                  | 0,6614 | 0,30    | 0,0118 | 6,0    | 0,2362 | 3086        | 2675   | TP        | 8               | 2,778    | 0,1094 | 6,5    |
| F8-16M                 | 8                    | 0,3150 | 16                    | 0,6299 | 8,2                  | 0,3228 | 15,8                  | 0,6220 | 0,30    | 0,0118 | 5,0    | 0,1969 | 3917        | 3394   | TP        | 9               | 3,000    | 0,1181 | 4,5    |
| F8-19M                 | 8                    | 0,3150 | 19                    | 0,7480 | 8,2                  | 0,3228 | 18,8                  | 0,7402 | 0,30    | 0,0118 | 7,0    | 0,2756 | 3939        | 3476   | TP        | 8               | 3,175    | 0,1250 | 9,1    |
| F9-20M                 | 9                    | 0,3543 | 20                    | 0,7874 | 9,2                  | 0,3622 | 19,8                  | 0,7795 | 0,30    | 0,0118 | 7,0    | 0,2756 | 3855        | 3571   | TP        | 8               | 3,175    | 0,1250 | 9,9    |
| F10-18M                | 10                   | 0,3937 | 18                    | 0,7087 | 10,2                 | 0,4016 | 17,8                  | 0,7008 | 0,30    | 0,0118 | 5,5    | 0,2165 | 2470        | 2721   | TP        | 10              | 2,381    | 0,0937 | 5,4    |

| Bearing Reference | Inner Ring Bore Dia. |        | Outer Ring Outer |        | Outer ring Bore Dia. |        | Inner Ring Outer Dia. |        | Radius  |        | Height |        | Load Rating |        | Cage Type | Ball Complement |          |        | Weight (Ref.) |
|-------------------|----------------------|--------|------------------|--------|----------------------|--------|-----------------------|--------|---------|--------|--------|--------|-------------|--------|-----------|-----------------|----------|--------|---------------|
|                   | d                    |        | D                |        | d1                   |        | D1                    |        | Rs(min) |        | H      |        | Ca(N)       | Coa(N) |           | Qty: Z          | Size: Dw |        |               |
|                   | mm                   | inch   | mm               | Inch   | mm                   | Inch   | mm                    | Inch   | mm      | inch   | mm     | inch   |             |        |           |                 | mm       | inch   |               |
| F2-6              | 2,0                  | 0,0787 | 6                | 0,2362 | 2,0                  | 0,0787 | 6                     | 0,2362 | 0,10    | 0,0039 | 3,0    | 0,1181 | 117         | 83     | TD        | 6               | 1,000    | 0,0394 | 0,6           |
| F2X-7             | 2,5                  | 0,0984 | 7                | 0,2756 | 2,5                  | 0,0984 | 7                     | 0,2756 | 0,10    | 0,0039 | 3,5    | 0,1378 | 156         | 117    | TD        | 6               | 1,200    | 0,0472 | 0,9           |
| F3-8              | 3,0                  | 0,1181 | 8                | 0,3150 | 3,0                  | 0,1181 | 8                     | 0,3150 | 0,10    | 0,0039 | 3,5    | 0,1378 | 166         | 137    | TD        | 7               | 1,200    | 0,0472 | 0,6           |
| F4-9              | 4,0                  | 0,1575 | 9                | 0,3543 | 4,0                  | 0,1575 | 9                     | 0,3543 | 0,15    | 0,0059 | 4,0    | 0,1575 | 166         | 156    | TD        | 8               | 1,200    | 0,0472 | 1,5           |
| F4-10             | 4,0                  | 0,1575 | 10               | 0,3937 | 4,0                  | 0,1575 | 10                    | 0,3937 | 0,15    | 0,0059 | 4,5    | 0,1772 | 274         | 245    | TD        | 7               | 1,588    | 0,0625 | 2,0           |
| F5-11             | 5,0                  | 0,1969 | 11               | 0,4331 | 5,0                  | 0,1969 | 11                    | 0,4331 | 0,15    | 0,0059 | 4,5    | 0,1772 | 284         | 284    | TD        | 7               | 1,588    | 0,0625 | 2,4           |
| F6-12             | 6,0                  | 0,2362 | 12               | 0,4724 | 6,0                  | 0,2362 | 12                    | 0,4724 | 0,15    | 0,0059 | 4,5    | 0,1772 | 274         | 284    | TD        | 9               | 1,588    | 0,0625 | 2,5           |
| F7-15             | 7,0                  | 0,2756 | 15               | 0,5906 | 7,0                  | 0,2756 | 15                    | 0,5906 | 0,20    | 0,0079 | 5,0    | 0,1969 | 558         | 548    | TD        | 8               | 2,381    | 0,0937 | 4,4           |
| F8-16             | 8,0                  | 0,3150 | 16               | 0,6299 | 8,0                  | 0,3150 | 16                    | 0,9299 | 0,20    | 0,0079 | 5,0    | 0,1969 | 597         | 627    | TD        | 8               | 2,000    | 0,0787 | 5,0           |
| F9-17             | 9,0                  | 0,3543 | 17               | 0,6693 | 9,0                  | 0,3543 | 17                    | 0,6693 | 0,20    | 0,0079 | 5,0    | 0,1969 | 437         | 542    | TD        | 9               | 2,000    | 0,0787 | 5,1           |
| F10-18            | 10,0                 | 0,3937 | 18               | 0,7087 | 10,0                 | 0,3937 | 18                    | 0,7087 | 0,20    | 0,0079 | 5,5    | 0,2165 | 617         | 705    | TD        | 9               | 2,381    | 0,0937 | 6,0           |

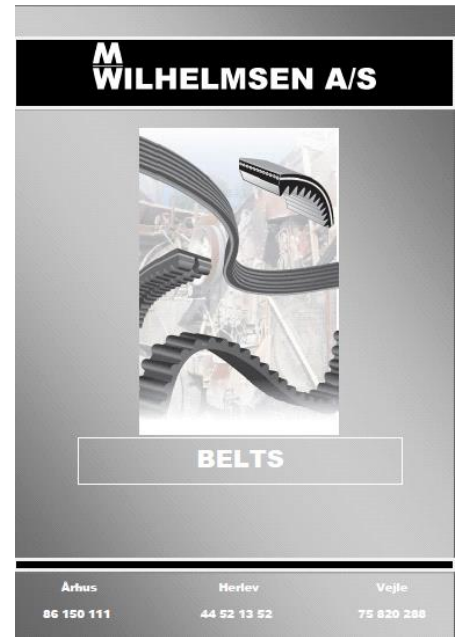
# OTHER CATALOGUES



**Linear  
katalog**



**Produkt  
katalog**



**Kileremme  
katalog**



**Vibrationsdæmpere**



**Befæstigelse  
katalog**



**Kileremskiver  
katalog**