

**M**  
**WILHELMSEN** A/s



**MODULSTANGHJULS  
KATALOG**

**Århus**

**86 150 111**

**Herlev**

**44 52 13 52**

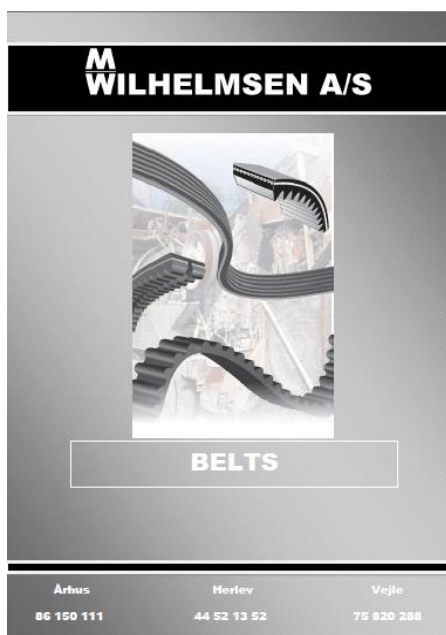
**Vejle**

**75 820 288**

## Indholdsfortegnelse

Modul stænger	side 3
Modulhjul model 1	side 4
Modulhjul model 1.5	side 4
Modulhjul model 2	side 4
Modulhjul model 2.5	side 5
Modulhjul model 3	side 5
Modulhjul model 4	side 5
Modulhjul model 5	side 6
Modulhjul model 6	side 6

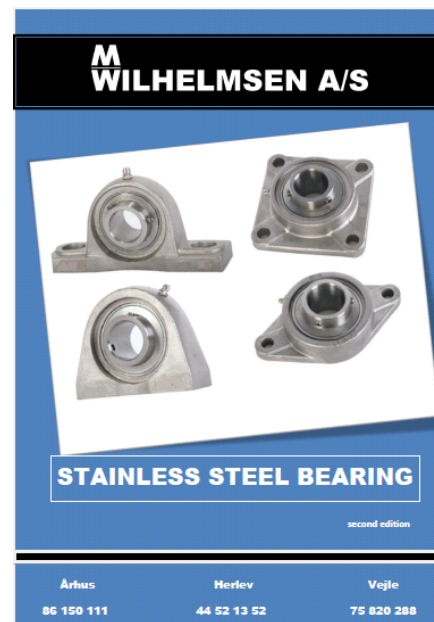
# Spørg efter vores andre produkt kataloger



Kileremme katalog



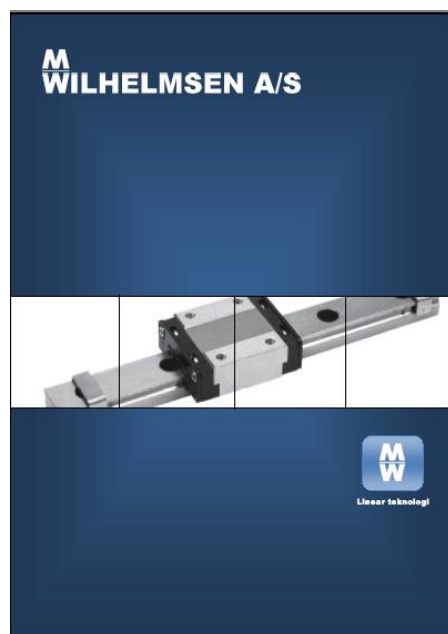
Produkt katalog



Rustfri kugleleje  
katalog



Vibrationsdæmpere  
katalog



Linear katalog



Kileremskiver  
katalog

M. Wilhelmsen A/S

Århus  
86 150 111

Herlev  
44 52 13 52

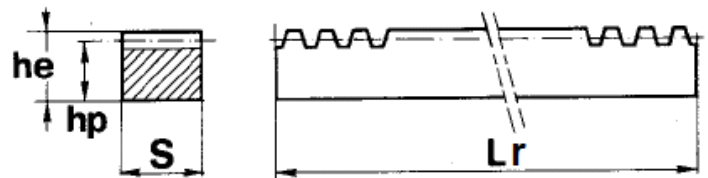
Vejle  
75 820 288

# MODUL STÆNGER

## Technical data



Tolerance on single pitch  $\pm 20 \mu\text{m}$   
Tolerance on sum of pitches  $\pm 30 \mu\text{m}$  on 500 mm.  
The quality grade of the toothing is from 8 to 9 at DIN 3962/63/67.  
Straight toothing  
Angle of pressure  $20^\circ$



Modul	Dimensioner			Længde
	S	he	hp	
1	15	15	14,0	2 m
1.5	17	17	15,5	2 m
2	20	20	18,0	2 m
2.5	25	25	22,5	2 m
3	30	30	27,0	2 m
4	40	40	36,0	2 m
5	50	50	45,0	2 m
6	60	60	54,0	2 m

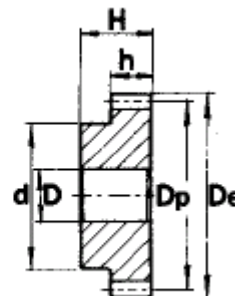
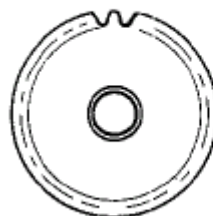
# MODULHJUL MOD. 1, 1.5, 2

**h**

- 1 = 15 mm
- 1,5 = 17 mm
- 2 = 20 mm
- 2,5 = 25 mm
- 3 = 30 mm
- 4 = 40 mm
- 5 = 50 mm
- 6 = 60 mm

**H**

- 1 = 25 mm
- 1,5 = 30 mm
- 2 = 35 mm
- 2,5 = 40 mm
- 3 = 50 mm
- 4 = 60 mm
- 5 = 75 mm
- 6 = 80 mm



Z	Modul 1			
	De	Dp	d	D
12	14	12	9	6
13	15	13	10	6
14	16	14	10	6
15	17	15	12	6
16	18	16	13	6
17	19	17	14	8
18	20	18	15	8
19	21	19	15	8
20	22	20	16	8
21	23	21	16	8
22	24	22	18	8
23	25	23	18	8
24	26	24	20	8
25	27	25	20	8
26	28	26	20	8
27	29	27	20	8
28	30	28	20	8
29	31	29	20	8
30	32	30	20	8
31	33	31	25	10
32	34	32	25	10
33	35	33	25	10
34	36	34	25	10
35	37	35	25	10
36	38	36	25	10
37	39	37	25	10
38	40	38	25	10
39	41	39	25	10
40	42	40	25	10
45	47	45	30	10
48	50	48	30	10
50	52	50	30	12
54	56	54	40	12
60	62	60	40	12
64	66	64	50	12
72	74	72	-	12
80	82	80	-	12
114				

Z	Modul 1,5			
	De	Dp	d	D
12	21,0	18,0	14	8
13	22,5	19,5	14	8
14	24,0	21,0	18	8
15	25,5	22,5	18	8
16	27,0	24,0	20	8
17	28,5	25,5	20	8
18	30,0	27,0	20	8
19	31,5	28,5	20	8
20	33,0	30,0	25	8
21	34,5	31,5	25	10
22	36,0	33,0	25	10
23	37,5	34,5	25	10
24	39,0	36,0	25	10
25	40,5	37,5	25	10
26	42,0	39,0	30	12
27	43,5	40,5	30	12
28	45,0	42,0	30	12
29	46,5	43,5	30	12
30	48,0	45,0	30	12
31	49,5	46,5	35	12
32	51,0	48,0	35	12
33	52,5	49,5	35	12
34	54,0	51,0	35	12
35	55,5	52,5	35	12
36	57,0	54,0	35	12
37	58,5	55,5	40	12
38	60,0	57,0	40	12
39	61,5	58,5	40	12
40	63,0	60,0	40	12
45	70,5	67,5	50	14
48	75,0	72,0	50	14
50	78,0	75,0	50	14
54	84,0	81,0	60	15
60	93,0	90,0	60	15
64	99,0	96,0	70	20
72	111,0	108,0	-	20
80	123,0	120,0	-	20
114	174,0	171,0	-	20

Z	Modul 2			
	De	Dp	d	D
12	28	24	18	10
13	30	26	19	10
14	32	28	20	10
15	34	30	22	10
16	36	32	24	10
17	38	34	25	10
18	40	36	25	10
19	42	38	25	10
20	44	40	30	10
21	46	42	30	12
22	48	44	30	12
23	50	46	30	12
24	52	48	35	12
25	54	50	35	12
26	56	52	40	12
27	58	54	40	12
28	60	56	40	12
29	62	58	40	14
30	64	60	40	14
31	66	62	45	14
32	68	64	45	14
33	70	66	45	14
34	72	68	45	14
35	74	70	45	14
36	76	72	45	14
37	78	74	50	14
38	80	76	50	14
39	82	78	50	14
40	84	80	50	14
45	94	90	60	16
48	100	96	70	16
50	104	100	70	16
54	112	108	70	20
60	124	120	70	20
64	132	128	80	20
72	148	144	-	20
80	164	160	-	20
114				

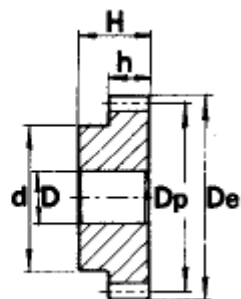
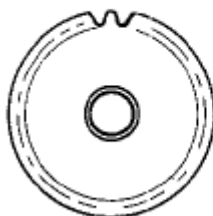
# MODULHJUL MOD. 2,5, 3, 4

**h**

- 1 = 15 mm
- 1,5 = 17 mm
- 2 = 20 mm
- 2,5 = 25 mm
- 3 = 30 mm
- 4 = 40 mm
- 5 = 50 mm
- 6 = 60 mm

**H**

- 1 = 25 mm
- 1,5 = 30 mm
- 2 = 35 mm
- 2,5 = 40 mm
- 3 = 50 mm
- 4 = 60 mm
- 5 = 75 mm
- 6 = 80 mm



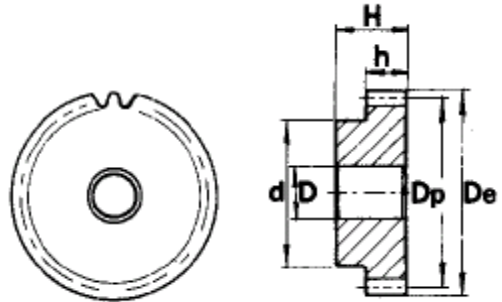
Z	Modul 2,5			
	De	Dp	d	D
12	35,0	30,0	22	10
13	37,5	32,5	25	10
14	40,0	35,0	28	10
15	42,5	37,5	30	10
16	45,0	40,0	32	12
17	47,5	42,5	35	12
18	50,0	45,0	35	12
19	52,5	47,5	35	12
20	55,0	50,0	40	14
21	57,5	52,5	40	14
22	60,0	55,0	45	14
23	62,5	57,5	45	14
24	65,0	60,0	45	14
25	67,5	62,5	50	14
26	70,0	65,0	50	14
27	72,5	67,5	50	14
28	75,0	70,0	50	14
29	77,5	72,5	50	14
30	80,0	75,0	55	16
31	82,5	77,5	55	16
32	85,0	80,0	55	16
33	87,5	82,5	55	16
34	90,0	85,0	55	16
35	92,5	87,5	60	16
36	95,0	90,0	60	16
37	97,5	92,5	60	16
38	100,0	95,0	60	16
39	102,5	97,5	60	16
40	105,0	100,0	70	20
45	117,5	112,5	70	20
48	125	120,0	80	20
50	130	125,0	80	20
54	155	150,0	100	20
60	-	-	-	-
64	-	-	-	-
72	-	-	-	-
80	-	-	-	-
114	-	-	-	-

Z	Modul 3			
	De	Dp	d	D
12	42	36	25	12
13	45	39	25	12
14	48	42	30	12
15	51	45	35	12
16	54	48	38	15
17	57	51	42	15
18	60	54	45	15
19	63	57	45	15
20	66	25	45	15
21	69	63	45	15
22	72	66	50	15
23	75	69	50	15
24	78	72	50	16
25	81	75	60	16
26	84	78	60	16
27	87	81	60	16
28	90	84	60	16
29	93	87	60	16
30	96	90	60	16
31	99	93	70	20
32	102	96	70	20
33	105	99	70	20
34	108	102	70	20
35	111	105	70	20
36	114	108	70	20
37	117	111	80	20
38	120	114	80	20
39	123	117	80	20
40	126	120	80	20
45	141	135	90	20
48	150	144	100	20
50	156	150	-	25
54	186	180	-	25
60	222	216	-	25
64	246	240	-	25
72	291	285	-	25
80	-	-	-	-
114	-	-	-	-

Z	Modul 4			
	De	Dp	d	D
12	56	48	35	14
13	60	52	40	14
14	64	56	45	14
15	68	60	45	14
16	72	64	50	15
17	76	68	50	15
18	80	72	50	15
19	84	76	60	15
20	88	80	60	15
21	92	84	70	20
22	-	-	-	-
23	-	-	-	-
24	104	96	75	20
25	108	100	75	20
26	-	-	-	-
27	-	-	-	-
28	-	-	-	-
29	-	-	-	-
30	128	120	75	20
31	-	-	-	-
32	136	128	80	20
33	-	-	-	-
34	-	-	-	-
35	-	-	-	-
36	152	144	80	20
37	-	-	-	-
38	-	-	-	-
39	-	-	-	-
40	168	160	-	25
45	188	180	-	25
48	200	192	-	25
50	208	200	-	25
54	248	240	-	25
60	-	-	-	-
64	328	-	-	25
72	-	-	-	-
80	-	-	-	-
114	-	-	-	-

# MODULHJUL MOD. 5, 6

h	H
1 = 15 mm	1 = 25 mm
1,5 = 17 mm	1,5 = 30 mm
2 = 20 mm	2 = 35 mm
2,5 = 25 mm	2,5 = 40 mm
3 = 30 mm	3 = 50 mm
4 = 40 mm	4 = 60 mm
5 = 50 mm	5 = 75 mm
6 = 60 mm	6 = 80 mm



Z	Modul 5			
	De	Dp	d	D
12	70	60	45	16
13	-	-	-	-
14	-	-	-	-
15	85	75	60	20
16	90	80	65	20
17	-	-	-	-
18	100	90	70	20
19	-	-	-	-
20	110	100	80	20
21	-	-	-	-
22	-	-	-	-
23	-	-	-	-
24	130	120	90	25
25	-	-	-	-
26	-	-	-	-
27	-	-	-	-
28	-	-	-	-
29	-	-	-	-
30	160	150	100	25
31	-	-	-	-
32	170	160	-	25
33	-	-	-	-
34	-	-	-	-
35	-	-	-	-
36	-	-	-	-
37	-	-	-	-
38	-	-	-	-
39	-	-	-	-
40	210	200	-	30
45	235	225	-	30
48	250	240	-	30
50	260	250	-	30
54	310	300	-	30
60	-	-	-	-
64	410	400	-	30
72				
80				
114				

Z	Modul 6			
	De	Dp	d	D
12	84	72	54	20
13	-	-	-	-
14	-	-	-	-
15	102	90	70	20
16	108	96	75	20
17	-	-	-	-
18	120	108	80	20
19	-	-	-	-
20	132	120	90	20
21	-	-	-	-
22	-	-	-	-
23	-	-	-	-
24	156	144	110	25
25	-	-	-	-
26	-	-	-	-
27	-	-	-	-
28	-	-	-	-
29	-	-	-	-
30	192	180	-	25
31	-	-	-	-
32	204	192	-	25
33	-	-	-	-
34	-	-	-	-
35	-	-	-	-
36	-	-	-	-
37	-	-	-	-
38	-	-	-	-
39	-	-	-	-
40	-	-	-	-
45	-	-	-	-
48	-	-	-	-
50	-	-	-	-
54	-	-	-	-
60	-	-	-	-
64	-	-	-	-
72				
80				
114				